

[Algorithms] Manuscript ID: algorithms-1760905 - Revision Reminder

riley.song@mdpi.com <riley.song@mdpi.com>

on behalf of

Algorithms Editorial Office <algorithms@mdpi.com>

Thu 6/9/2022 8:27 AM

To: Soelistijanto B <b.soelistijanto@usd.ac.id>

Cc: Vittalis Ayu <vittalis.ayu@usd.ac.id>; Algorithms Editorial Office <algorithms@mdpi.com>

Dear Dr. Soelistijanto,

We sent a revision request for the following manuscript on 2 June 2022.

Manuscript ID: algorithms-1760905

Type of manuscript: Article

Title: Improving Traffic Load Distribution Fairness in Mobile Social Networks

Authors: Bambang Soelistijanto *, And Vittalis Ayu

Received: 23 May 2022

E-mails: b.soelistijanto@usd.ac.id, vittalis.ayu@usd.ac.id

Submitted to section: Algorithms for Multidisciplinary Applications,

[https://www.mdpi.com/journal/algorithms/sections/Algorithms for Multidisciplinary Applications](https://www.mdpi.com/journal/algorithms/sections/Algorithms_for_Multidisciplinary_Applications)

Algorithms for Communication Networks

https://www.mdpi.com/journal/algorithms/special_issues/algorithm_communication_network

May we kindly ask you to update us on the progress of your revisions? If you have finished your revisions, please upload the revised version together with your responses to the reviewers as soon as possible.

You can find your manuscript and review reports at this link:

<https://susy.mdpi.com/user/manuscripts/resubmit/9e31cd0f502d97b254078bc466855b21>

Thank you in advance for your kind cooperation and we look forward to hearing from you soon.

Kind regards,
Ms. Riley Song

E-Mail: riley.song@mdpi.com

--

MDPI Wuhan Office No.6 Jingan Road, 5.5 Creative Industry Park, 25th Floor,
Hubei Province, China

MDPI Algorithms Editorial Office
St. Alban-Anlage 66, 4052 Basel, Switzerland
E-Mail: algorithms@mdpi.com
<http://www.mdpi.com/journal/algorithms>



▼ User Menu ?

- Home
- Manage Accounts
- Change Password
- Edit Profile
- Logout

▼ Submissions Menu ?

- Submit Manuscript
- Display Submitted Manuscripts
- English Editing
- Discount Vouchers
- Invoices
- LaTeX Word Count

▼ Reviewers Menu ?

- Reviews
- Volunteer Preferences

Journal Algorithms (ISSN 1999-4893)
Manuscript ID algorithms-1760905
Type Article
Title Improving Traffic Load Distribution Fairness in Mobile Social Networks
Authors Bambang Soelistijanto * , Vittalís Ayu
Section Algorithms for Multidisciplinary Applications
Special Issue Algorithms for Communication Networks

Abstract Mobile social networks (MSNs) suffer from an unbalanced traffic load distribution due to the heterogeneity in mobility of nodes (humans) in the network. A few nodes in these networks are highly mobile, and the proposed social-based routing algorithms are likely to choose these most "social" nodes as the best message relays. Finally, this could lead to inequitable traffic load distribution and resource utilization, such as faster battery drain and/or storage consumption of the most (socially) popular nodes. We propose a framework called Traffic Load Distribution Aware (TraLDA) to improve traffic load balancing across network nodes. We present a novel method for calculating node popularity that takes into account both inherent and social-relations popularity. The former is purely determined by the node's sociability level in the network, and in TraLDA is computed using the Kalman-prediction that considers the node's periodicity behaviour. However, the latter takes the benefit of interactions with more popular neighbours (acquaintances) to boost the popularity of lower (social) level nodes. Using extensive simulations in the ONE environment driven by real mobility scenarios, we show that TraLDA can enhance the traffic load distribution fairness of the classical, yet popular social-aware routing algorithms BubbleRap and SimBet without affecting the overall delivery performance.

The coverletter for this review report has been saved in the database. You can safely close this window.

Authors' Responses to Reviewer's Comments (Reviewer 1)

Author's Notes Dear Reviewer 1,

We thank you for the valuable comments and the opportunity to improve our paper.

In response to your review, we revised our manuscript with our point-by-point response to the comments explained below.

Best regards,

Bambang Soelistijanto and Vittalís Ayu

+++++

Comment#1: The authors should please state more clearly how their approach is related to existing approaches and how it advances the fields in terms of improving traffic load distribution over social networks. How does this approach relevantly promote the state of the art, and how relevant is this for social networks that are already now handled well by existing approaches in terms of load distribution fairness? As it stands. I am not convinced in terms of novelty. This is mainly a modification of many similar approaches for improving traffic load distribution.

Author response: We agree with the reviewer.

Author action: We updated the Related Work and add more the related literatures as comparisons of our work to the existing approaches, so that our contributions can be described clearly .

Comment#2: In the Introduction, several key works are overlooked, especially: Saving human lives: What complexity science and information systems can contribute, Dirk Helbing,et al. J.Stat.Phys. 158. 753-781 (2015) and Social Physics, Marko Jusup, et al., Phy. Rep. 948, 1-148 (2022). Where precisely such approaches have been reviewed in the light of many preceeding similar methods for improving traffic. The introduction should be much improved in terms of relevant precesing work.

Author response: We agree with the reviewer

Author action: We improve the Introduction, adding the some literatures suggested by the reviewers so that the rationale behind our work can be stated clearly.

Comment#3: It would also improve the paper of the figure captions would be made more self-contained. In addition to briefly stating what is shown, one could also consider a sentence or two saying what is the main message of the each figure.

Author response: We agree with the reviewer.

Author action: We add captions in all figures in the manuscript , adding more detail description to each of the figure.

Comment#4: More importantly, the presentation of the results is quite abstract, with very little guidance of the reader throughout the many algorithms and mathematical details. Since Algorithms is not a purely computer science or applied mathematics journal, such style will likely or not appeal and not be understandable to the majority of the reader. The authors must improve the clarity of the writing.

Author response: We agree with the reviewer.

Author action: We improve explanation of our results and to add clarity through the proposed algorithm, we

also add calculation examples and illustrations, such as in Figure 6.

Comment#5: It would be very useful if the authors would make their source code available as supplementary materials. This would promote the usage of the proposed algorithm and allow also others to take advantage of this research, and also to allow them to reproduce the results.

Author response: We agree with the reviewer.

Author action: We add the link of the source code of TraLDA as supplementantary material, so it can accessed publicly.

Comment#6: Some references contains errors and inconsistent formatting. It is difficult to give credit to research if even such elementary aspects of the works are not error free. The references should be made error free and formatted in agreement with the journal guidelines.

Author response: We agree with the reviewer.

Author action: We improve the references to be error-free and adjusting the style with Multidiciplinary Digital Publishing Institute formatting.

Comment#7: Finally, do not use so many abbreviations in the abstract and elsewhere. In the absense of stringent space constraints, the use of abbreviation is not a good idea because it decreases ease of reading if a person has to remenmber all the abbreviations. The paper is at places further difficult to follow due to the excessive use of abbreviations.

Author response: We agree with the reviewer.

Author action: We improve our manuscript by removing the abbreviations and write the respective term as it is to increase clarity.

Review Report Form

English language and style

- ☐ English very difficult to understand/incomprehensible
- ☐ Extensive editing of English language and style required
- ☒ Moderate English changes required
- ☐ English language and style are fine/minor spell check required
- ☐ I don't feel qualified to judge about the English language and style

	Yes	Can be improved	Must be improved	Not applicable
Does the introduction provide sufficient background and include all relevant references?	()	()	(x)	()
Are all the cited references relevant to the research?	()	(x)	()	()
Is the research design appropriate?	(x)	()	()	()
Are the methods adequately described?	()	(x)	()	()
Are the results clearly presented?	()	(x)	()	()
Are the conclusions supported by the results?	()	(x)	()	()

Comments and
Suggestions for Authors

In "Improving Traffic Load Distribution Fairness in Mobile Social Networks" authors study a relevant problem with potential applications and further research.

But similar methods for improving traffic load distribution have been presented before, and it is not clear how groundbreaking and relevant is this for the readers of Algorithms. If a revision will be granted, the following comments should be taken into account with care and love to detail.

1) The authors should please state more clearly how their approach is related to existing approaches and how it advances the field in terms of improving traffic load distribution over social networks. How does this approach relevantly promote the state of the art, and how relevant is this for social networks that are already now handled well by existing approaches in terms of load distribution fairness? As it stands, I am not convinced in terms of novelty. This is mainly a modification of many similar approaches for improving traffic load distribution.

2) In the introduction, several key works are overlooked, especially: Saving human lives: What complexity science and information systems can contribute, Dirk Helbing, et al. J. Stat. Phys. 158, 735-781 (2015) and Social physics, Marko Jusup, et al., Phys. Rep. 948, 1-148 (2022), where precisely such approaches have been reviewed in the light of many preceding similar methods for improving traffic. The introduction should be much improved in terms of relevant preceding work.

3) It would also improve the paper if the figure captions would be made more self contained. In addition to briefly stating what is shown, one could also consider a sentence or two saying what is the main message of each figure.

4) More importantly, the presentation of the results is quite abstract, with very little guidance of the reader through the many algorithms and mathematical details. Since Algorithms is not a purely computer science or applied mathematics journal, such style will likely not appeal and not be understandable to the majority of the readers. The authors must improve the clarity of the writing.

5) Also, it would be very useful if the authors would make their source code available as supplementary material. This would promote the usage of the proposed algorithm and allow also others to take advantage of this research, and also to allow them to reproduce the results.

6) Some references contain errors and inconsistent formatting. It is difficult to give credit to research if even such elementary aspects of the work are not error free. The references should be made error free and formatted in agreement with the journal guidelines.

7) Finally, do not use so many abbreviations in the abstract and elsewhere. In the absence of stringent space constraints, the use of abbreviation is not a good idea because it decreases ease of reading if a person has to remember all the abbreviations. The paper is at places further difficult to follow due to the excessive use of abbreviations.

If a revision will be granted, I will be happy to review a revised manuscript.

Submission Date 23 May 2022

Date of this review 02 Jun 2022 13:33:50





▼ User Menu ?

- Home
- Manage Accounts
- Change Password
- Edit Profile
- Logout

▼ Submissions Menu ?

- Submit Manuscript
- Display Submitted Manuscripts
- English Editing
- Discount Vouchers
- Invoices
- LaTeX Word Count

▼ Reviewers Menu ?

- Reviews
- Volunteer Preferences

Journal Algorithms (ISSN 1999-4893)
Manuscript ID algorithms-1760905
Type Article
Title Improving Traffic Load Distribution Fairness in Mobile Social Networks
Authors Bambang Soelistijanto * , Vittalys Ayu
Section Algorithms for Multidisciplinary Applications
Special Issue Algorithms for Communication Networks

Abstract Mobile social networks (MSNs) suffer from an unbalanced traffic load distribution due to the heterogeneity in mobility of nodes (humans) in the network. A few nodes in these networks are highly mobile, and the proposed social-based routing algorithms are likely to choose these most "social" nodes as the best message relays. Finally, this could lead to inequitable traffic load distribution and resource utilization, such as faster battery drain and/or storage consumption of the most (socially) popular nodes. We propose a framework called Traffic Load Distribution Aware (TraLDA) to improve traffic load balancing across network nodes. We present a novel method for calculating node popularity that takes into account both inherent and social-relations popularity. The former is purely determined by the node's sociability level in the network, and in TraLDA is computed using the Kalman-prediction that considers the node's periodicity behaviour. However, the latter takes the benefit of interactions with more popular neighbours (acquaintances) to boost the popularity of lower (social) level nodes. Using extensive simulations in the ONE environment driven by real mobility scenarios, we show that TraLDA can enhance the traffic load distribution fairness of the classical, yet popular social-aware routing algorithms BubbleRap and SimBet without affecting the overall delivery performance.

The coverletter for this review report has been saved in the database. You can safely close this window.

Authors' Responses to Reviewer's Comments (Reviewer 3)

Author's Notes Dear Reviewer 3,

We thank you for the valuable comments and the opportunity to improve our paper.

In response to your review, we revised our manuscript with our point-by-point response to the comments explained below.

Best regards,

Bambang Soelistijanto and Vittalys Ayu

+++++

Comment#1: In my opinion, the paper is extremely interesting but there are some points for improvements. In particular, the authors should separate the introduction from the Related Literature. In the introduction they should explain the rationale behind their work and should provide an overview of the proposed approach.

Author response: We agree with the reviewer.

Author action: We improved the paper by separating Introduction from Related Literature and explain the rationale behind our work in the Introduction.

Comment#2: Instead, the description of related approaches should be placed in the Related Literature section.

Author response: We agree with the reviewer

Author action: We improved the paper by separating Introduction from Related Literature and describe the related approaches in Related Literature.

Comment#3: Regarding that section I see many similarities between the problem considered by the authors and the corresponding solution proposed by them, on the one hand, and the problem of computing the trust and reputation of a smart object in a MultiIoT context, on the other hand. In particular, I would suggest that the authors compare their approach with those described in the following papers, "An approach to evaluate trust and reputation of things in a MultiIoT scenario" and "An approach to compute the scope of a social object in a MultiIoT scenario."

Author response: We agree with the reviewer.

Author action: We improve Related Literature by adding comparison with the approaches suggested by the reviewer.

Comment#4: Finally, in order to make the many formulas included in the paper more understandable, I suggest that the authors add a leading example throughout Section 3 and possibly along Section 2 as well.

Author response: We agree with the reviewer.

Author action: To explain the many formulas, we include calculation example and illustration such as in Figure 6. In addition, we provide the implementation of those formulas in TraLDA's source code is attached in supplementary file

Review Report Form

- English language and style
- ☐ English very difficult to understand/incomprehensible
 - ☐ Extensive editing of English language and style required
 - ☐ Moderate English changes required
 - ☒ English language and style are fine/minor spell check required
 - ☐ I don't feel qualified to judge about the English language and style

	Yes	Can be improved	Must be improved	Not applicable
Does the introduction provide sufficient background and include all relevant references?	<input type="checkbox"/>	<input checked="" type="checkbox"/>	<input type="checkbox"/>	<input type="checkbox"/>
Are all the cited references relevant to the research?	<input checked="" type="checkbox"/>	<input type="checkbox"/>	<input type="checkbox"/>	<input type="checkbox"/>
Is the research design appropriate?	<input type="checkbox"/>	<input checked="" type="checkbox"/>	<input type="checkbox"/>	<input type="checkbox"/>
Are the methods adequately described?	<input checked="" type="checkbox"/>	<input type="checkbox"/>	<input type="checkbox"/>	<input type="checkbox"/>
Are the results clearly presented?	<input type="checkbox"/>	<input checked="" type="checkbox"/>	<input type="checkbox"/>	<input type="checkbox"/>
Are the conclusions supported by the results?	<input checked="" type="checkbox"/>	<input type="checkbox"/>	<input type="checkbox"/>	<input type="checkbox"/>

Comments and Suggestions for Authors

In this paper, the authors propose a framework called TraLDA to improve traffic load balancing across network nodes. The framework is based on a new approach to calculate the popularity of a node. The problem considered by the authors is extremely important and the solution they propose appears to be sound and well-founded. In addition, the authors propose several experiments that aim to demonstrate the soundness of the proposed approach.

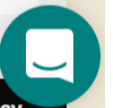
In my opinion, the paper is extremely interesting but there are some points for improvement. In particular, the authors should separate the Introduction from the Related Literature. In the Introduction they should explain the rationale behind their work and should provide an overview of the proposed approach.

Instead, the description of related approaches should be placed in the Related Literature section. Regarding that section I see many similarities between the problem considered by the authors and the corresponding solution proposed by them, on the one hand, and the problem of computing the trust and reputation of a smart object in a Multi-IoT context, on the other hand. In particular, I would suggest that the authors compare their approach with those described in the following papers, "An approach to evaluate trust and reputation of things in a Multi-IoTs scenario" and "An approach to compute the scope of a social object in a Multi-IoT scenario."

Finally, in order to make the many formulas included in the paper more understandable, I suggest that the authors add a leading example throughout Section 3 and possibly along Section 2 as well.



Submission Date 23 May 2022
Date of this review 31 May 2022 18:05:35



Dear Reviewer 1,

We thank you for the valuable comments and the opportunity to improve our paper.

In response to your review, we revised our manuscript with our point-by-point response to the comments explained below.

Best regards,

Bambang Soelistijanto and Vittalis Ayu

+++++

Comment#1: The authors should please state more clearly how their approach is related to existing approaches and how it advances the fields in terms of improving traffic load distribution over social networks. How does this approach relevantly promote the state of the art, and how relevant is this for social networks that are already now handled well by existing approaches in terms of load distribution fairness? As it stands. I am not convinced in terms of novelty. This is mainly a modification of many similar approaches for improving traffic load distribution.

Author response: We agree with the reviewer.

Author action: We updated the Related Work and add more the related literatures as comparisons of our work to the existing approaches, so that our contributions can be described clearly .

Comment#2: In the Introduction, several key works are overlooked, especially: Saving human lives: What complexity science and information systems can contribute, Dirk Helbing, et al. J.Stat.Phys. 158. 753-781 (2015) and Social Physics, Marko Jusup, et al., Phy. Rep. 948, 1-148 (2022). Where precisely such approaches have been reviewed in the light of many preceeding similar methods for improving traffic. The introduction should be much improved in terms of relevant precesing work.

Author response: We agree with the reviewer

Author action: We improve the Introduction, adding the some literatures suggested by the reviewers so that the rationale behind our work can be stated clearly.

Comment#3: It would also improve the paper of the figure captions would be made more self-contained. In addition to briefly stating what is shown, one could also consider a sentence or two saying what is the main message of the each figure.

Author response: We agree with the reviewer.

Author action: We add captions in all figures in the manuscript , adding more detail description to each of the figure.

Comment#4: More importantly, the presentation of the results is quite abstract, with very little guidance of the reader throughout the many algorithms and mathematical details. Since Algorithms is not a purely computer science or applied mathematics journal, such style will likely or not appeal and not be understandable to the majority of the reader. The authors must improve the clarity of the writing.

Author response: We agree with the reviewer.

Author action: We improve explanation of our results and to add clarity through the proposed algorithm, we also add calculation examples and illustrations, such as in Figure 6.

Comment#5: It would be very useful if the authors would make their source code available as supplementary materials. This would promote the usage of the proposed algorithm and allow also others to take advantage of this research, and also to allow them to reproduce the results.

Author response: We agree with the reviewer.

Author action: We add the link of the source code of TraLDA as supplementary material, so it can be accessed publicly.

Comment#6: Some references contain errors and inconsistent formatting. It is difficult to give credit to research if even such elementary aspects of the works are not error free. The references should be made error free and formatted in agreement with the journal guidelines.

Author response: We agree with the reviewer.

Author action: We improve the references to be error-free and adjust the style with Multidisciplinary Digital Publishing Institute formatting.

Comment#7: Finally, do not use so many abbreviations in the abstract and elsewhere. In the absence of stringent space constraints, the use of abbreviation is not a good idea because it decreases ease of reading if a person has to remember all the abbreviations. The paper is at places further difficult to follow due to the excessive use of abbreviations.

Author response: We agree with the reviewer.

Author action: We improve our manuscript by removing the abbreviations and write the respective term as it is to increase clarity.

Dear Reviewer 2,

We thank you for the valuable comments and the opportunity to improve our paper.

In response to your review, we revised our manuscript with our point-by-point response to the comments explained below.

Best regards,

Bambang Soelistijanto and Vittalis Ayu

+++++

Comment#1: In my opinion, the paper is extremely interesting but there are some points for improvements. In particular, the authors should separate the introduction from the Related Literature. In the introduction they should explain the rationale behind their work and should provide an overview of the proposed approach.

Author response: We agree with the reviewer.

Author action: We improved the paper by separating Introduction from Related Literature and explain the rationale behind our work in the Introduction.

Comment#2: Instead, the description of related approaches should be placed in the Related Literature section.

Author response: We agree with the reviewer

Author action: We improved the paper by separating Introduction from Related Literature and describe the related approaches in Related Literature.

Comment#3: Regarding that section I see many similarities between the problem considered by the authors and the corresponding solution proposed by them, on the one hand, and the problem of computing the trust and reputation of a smart object in a MultiIoT context, on the other hand. In particular, I would suggest that the authors compare their approach with those described in the following papers, "An approach to evaluate trust and reputation of things in a MultiIoT scenario" and "An approach to compute the scope of a social object in a MultiIoT scenario."

Author response: We agree with the reviewer.

Author action: We improve Related Literature by adding comparison with the approaches suggested by the reviewer.

Comment#4: Finally, in order to make the many formulas included in the paper more understandable, I suggest that the authors add a leading example throughout Section 3 and possibly along Section 2 as well.

Author response: We agree with the reviewer.

Author action: To explain the many formulas, we include calculation example and illustration such as in Figure 6. In addition, we provide the implementation of those formulas in TraLDA's source code is attached in supplementary file

1 Article

2 Improving Traffic Load Distribution Fairness in Mobile Social 3 Networks

4 Bambang Soelistijanto ^{1,*}, and Vittalys Ayu ¹

5 ¹ Department of Informatics, Sanata Dharma University; b.soelistijanto@usd.ac.id; vittalys.ayu@usd.ac.id
6 * Correspondence: b.soelistijanto@usd.ac.id

7 **Abstract:** Mobile social networks suffer from an unbalanced traffic load distribution due to the het-
8 erogeneity in mobility of nodes (humans) in the network. A few nodes in these networks are highly
9 mobile, and the proposed social-based routing algorithms are likely to choose these most "social"
10 nodes as the best message relays. Finally, this could lead to inequitable traffic load distribution and
11 resource utilization, such as faster battery drain and/or storage consumption of the most (socially)
12 popular nodes. We propose a framework called *Traffic Load Distribution Aware* (TraLDA) to improve
13 traffic load balancing across network nodes. We present a novel method for calculating node pop-
14 ularity which takes into account both node inherent and social-relations popularity. The former is
15 purely determined by the node's sociability level in the network, and in TraLDA is computed using
16 the Kalman-prediction which considers the node's periodicity behaviour. However, the latter takes
17 the benefit of interactions with more popular neighbours (acquaintances) to boost the popularity of
18 lower (social) level nodes. Using extensive simulations in the Opportunistic Network Environment
19 (ONE) driven by real human mobility scenarios, we show that our proposed strategy enhances the
20 traffic load distribution fairness of the classical, yet popular social-aware routing algorithms Bub-
21 bleRap and SimBet without negatively impacting the overall delivery performance.

22 **Keywords:** fair traffic distribution; human mobility; node popularity; mobile social networks

24

25 **Citation:** Lastname, F.; Lastname, F.;
26 Lastname, F. Title. *Algorithms* **2022**,
15, x. <https://doi.org/10.3390/xxxxx>

27 Academic Editor: Firstname Last-
28 name

29 Received: date
30 Accepted: date
31 Published: date

32 **Publisher's Note:** MDPI stays neu-
33 tral with regard to jurisdictional
34 claims in published maps and institu-
35 tional affiliations.



36 **Copyright:** © 2022 by the authors.
37 Submitted for possible open access
38 publication under the terms and
39 conditions of the Creative Commons
40 Attribution (CC BY) license (<https://creativecommons.org/licenses/by/4.0/>).

1. Introduction

As a particular case of [MANETsmobile ad-hoc networks \(MANETs\)](#), opportunistic mobile networks ([OMNs](#)) [1] are unique dynamic wireless mobile networks. Unlike [MANETs](#), in such networks persistent connectivity is not a necessity, and end-to-end paths from sources to destinations are not assumed to exist at all times. A link between a pair of nodes is established whenever they come into contact. In [opportunistic mobile networks OMNs](#), pairwise node contacts occur randomly in time, and the duration of each contact is also random. Thanks to the omnipresence of mobile devices nowadays, e.g., mobile phones and tablets, human can exploit contact opportunities to exchange information by means of short radio range connections. This leads to human-centric opportunistic mobile networks, also referred to *mobile social networks* (MSNs) in [2,3]. These networks have mainly been introduced by combining social networks and mobile communication networks. MSNs take a human-centric approach to networking, closing the gap between networks and human behaviour. Moreover, studies in [4–6] revealed that social interactions influence human mobility. As a result, MSNs are closely linked to social ([re-](#)~~lation~~) networks, and knowledge about social ties can be used to improve [routing routing](#) algorithms [in such human-based networks](#).

Researchers currently focus on studying social relation patterns, e.g., node popularity and social similarity, as the choice parameters of relay nodes. Furthermore, the proposed social-based routing algorithms [7–9] typically favour nodes with many social ties

as optimal carriers for message transfers [7–9]. This might end up in heavy traffic load in the (socially) popular nodes, quickly draining the nodes' constraint resources, such as power and storage, and this unbalanced traffic load eventually deteriorates the network's delivery performance [10]. In addition, the poor traffic load balancing also results in unfair delivery success rate among individuals, where messages from popular individuals can reach the destinations with a high probability, but individuals with few social connections will experience in low delivery success [11]. This variance of the delivery rate becomes a deterrent for nodes to participate in the message forwarding. Ultimately, the unfairness of traffic load makes popular nodes are easy target of attacks [12].

Unbalanced traffic distribution across network nodes leading to traffic congestion in social networks has been extensively studied in several areas [13–15]. In [13], (data) traffic congestion during crowd disaster was thoroughly discussed. In that crowd management scenario, mobile devices carried by individuals is used to detect and inform to the crowd managers about the crowd density. However, in crowded areas traffic can increase dramatically within a short period of time, and, in turn, traffic congestion starts to occur, making the crowd managers fail to handle the crowd. In [14], traffic in social networks was investigated in various applications, ranging from vehicular traffic in urban environments to data traffic in Internet of Things and human-machine networks. In these settings, local failures such as traffic congestion in some parts of networks might provoke a cascade of failures throughout systems. Machine learning approaches were therefore nominated to address such issues. In [15], pocket switched networks were proposed to transfer data between users' mobile devices. Such opportunistic networks exploit human mobility to enable a store-carry-forward mechanism to deliver messages from sources to destinations. In each contact, social-based routing algorithms [7–9] typically select popular nodes (individuals) as the best relays in the network, resulting in unbalanced traffic distribution across nodes and traffic congestion in the most central nodes.

Social-based routing algorithms are a class of utility-based routing algorithms. In such schemes, heuristic methods are used to determine the "quality" (utility) of a node as a relay. Each node i retains $U_i(j)$, a utility function that denotes the likelihood of i delivering a message to j . The utility function can be based on some different parameters, such as contact history, mobility model, social relations, etc. Spyropoulos *et al.* [16] categorized utility functions into two types: destination-dependent (DD) and destination-independent (DI). In DD, node utility is dependent of the destination; i.e., node i is an optimal relay for one destination d_1 , yet node j is the best one for another d_2 , or $U_i(d_1) > U_j(d_1)$, but $U_i(d_2) < U_j(d_2)$ for $d_1 \neq d_2$. DD functions could be based on last-contact, social similarity, or correlated mobility pattern, with the given destination. However, destination-dependent (DD) imposes a large overhead on nodes, since the nodes should keep a single entry for each peer in the network. As opposed to DD, node utility in DI is independent of any destination, for example, a single node may be the best carrier for most/all destinations in the network, or in general it holds that $U_i(d_1) > U_j(d_1)$ then $U_i(d) > U_j(d)$ for most/all j, d . Instances of nodes which are better relays for all destinations would be those with many connections to others (e.g., hub nodes in scale-free networks), nodes with many acquaintances (e.g., popular nodes in social networks), or nodes with high mobility (e.g., cars or buses in vehicular delay-tolerant networks). Nevertheless, destination-independent (DI) imposes a higher forwarding overhead on better relays, leading to poorer fairness in both traffic load distribution and utilization of the nodes' resources.

This paper proposes a framework called *Traffic Load Distribution Aware* (hereafter, TraLDA), aiming to improve fairness in forwarding of social-based routing algorithms. Here, we introduce a novel computation of node (global) popularity in the entire network. This utility metric is obviously independent of the message destination, and it may contribute to a traffic load imbalance across nodes, as mentioned in [16]. In TraLDA, we consider two different popularities in the calculation of node popularity, namely *inherent popularity* and *social-relations popularity*. Inherent popularity is based solely on the node's so-

Formatted: Font color: Red

Formatted: Font color: Red

Formatted: Font color: Red

Formatted: Font color: Red

ciability level, and in TraLDA is computed using the Kalman-prediction [17] which considers the periodicity in human behaviour. The works in [18,19] confirmed that human activities typically exhibit some of periodicity. Consequently, the calculation of node popularity in mobile social networks should consider this property. Social-relations popularity, on the other hand, reflects the social benefit of connections with popular nodes, and spreads the popularity of these nodes to their lower ranking acquaintances. Finally, we apply the TraLDA's node popularity computation on the classical, yet prominent social-based routing algorithms SimBet [20] and BubbleRap [21], and next investigate the performance improvements of these routing schemes, particularly in the trade-off between forwarding fairness and efficiency. SimBet and BubbleRap basically combine two different utility metrics to decide node fitness as relay to a given destination: the one which is dependent of the destination (i.e., similarity and social community in SimBet and BubbleRap, respectively), and the other one which is independent of the destination (i.e., betweenness centrality and global popularity in SimBet and BubbleRap, respectively). In this case, TraLDA focuses on improving the calculation of global popularity and betweenness centrality in BubbleRap and SimBet, respectively.

The following are the main contributions we made in this paper:

- To increase fairness in forwarding of social-based routing algorithms in mobile social networks, we propose TraLDA, a framework of traffic load distribution aware. We offer a new method for calculating node global popularity, a function of both node inherent and social-relations popularity.
- The inherent popularity of a node is solely determined by the node's own mobility pattern or sociability level in the network, and in TraLDA is computed using the Kalman-prediction which accounts for the regularity (periodicity) of human behaviour.
- Node social-relation popularity, on the other hand, represents the advantages of connections with more popular or central nodes (individuals). It shares the popularity of more popular nodes to their less popular counterparts.
- Finally, we apply TraLDA on the calculation of node global popularity and centrality in BubbleRap and SimBet, respectively, in order to improve the traffic load balancing among network nodes. Using extensive simulations in the Opportunistic Network Environment (ONE) [22] driven by realistic human mobility scenarios, we show that TraLDA enhances fairness in forwarding of both schemes, without negatively affecting the overall delivery performances.

We proceed in this paper as follows. Related literature is given in Section 2, research background is described in Section 3, detailed design strategy of TraLDA is discussed in Section 4, simulation and discussion is presented in Section 5, and lastly conclusion and future work is showed in Section 6.

2. Related literature

Fairness is important in many areas of human lives, e.g., sociology, economics and politics, and it is also true in technologies. In computer engineering, distinct computer resources should be shared equally amongst all processes and threads. In computer networking, all nodes require to attain the bandwidth and quality of service (QoS) equitably. In [23] fairness challenges and issues in wireless networks is thoroughly discussed, and some trade-offs between fairness and performance are reviewed. Mtibaa and Harras [10] studied the trade-offs between fairness and efficiency of social-based routing algorithms in MSNs mobile social networks. They found that excluding popular nodes on the message forwarding significantly degrades the delivery efficiency. We in [24] also showed that absolute traffic load fairness leads to the deterrent of delivery efficiency; yet, high delivery efficiency results in unfairness of traffic load.

To overcome this problem, fair routing algorithms have been proposed for MSNs mobile social networks [11,25–27]. Fan *et al.* [11] introduced a fair routing strategy based on packet priority to improve fairness in success rate among nodes. Ying *et al.* [25] proposed FSMF, a fair social aware message forwarding to solve the issues of imbalanced traffic load distribution as well as unfair delivery rate. Pujol *et al.* [26] proposed FairRoute that combines social strength and buffer queue length as the routing metrics to fairly distribute the traffic load among nodes. Milena and Grundy [27] presented CafRep, an adaptive congestion aware forwarding strategy that diverts the traffic from congested nodes (popular nodes) to less congested nodes (unpopular nodes).

Indeed, fair routing algorithms in distributed, intermittently connected wireless networks like MSNs mobile social networks are more complex than those in conventional networks, such as the Internet, since: firstly(i), negotiation and compromise amongst autonomous nodes is more complicated, for example non-cooperative nodes may be reluctant to help other nodes in forwarding; and secondly(ii), due to the lack of knowledge about the global states, routing decisions are made solely based on nodes' local information. For the former-first issue, the impact of selfish nodes on delivery performance and resource consumption fairness has been investigated in [28]. In addition, to increase fairness in forwarding an incentive or a credit was applied on the routing decisions in [25]. Finally, in [29] a game theoretic approach is used to support fair cooperation among nodes in opportunistic networks. For the latter-second issue, current works of fair routing schemes searched for proper nodes' locally available information to ensure a better fairness and efficiency trade-off. Furthermore, there are two sorts of node local knowledge which are commonly used to improve traffic fairness and reduce congestion: (i) buffer statistics and (ii) social measures. For the former case, some algorithms consider node burden, inferred from the node's buffer queue length, as the forwarding metric to achieve a balanced traffic distribution. For example, Some algorithms consider node burden, inferred from the node's buffer queue length, as the forwarding metric to achieve a balanced traffic load distribution; for example, FOG [10] and GreBurD [30] prioritize nodes with higher residual buffer space as suitable relays to distribute load away from the congested nodes; CafRep [27] defines node retentiveness, calculated as an expected weighted moving average of the node's remaining storage, as the congestion heuristic to detect storage congestion in popular nodes. For the latter case, on the other hand, researchers search for better social network measures for improving fairness in forwarding of social-based routing schemes. For example, FairRoute [26] improves the calculation of pairwise tie strength based on the short-term and long-term relationships; SimBet [20] adds connection strength information to the routing metrics to offload traffic from popular nodes; Socially-Aware Prediction (SAP) [31] estimates future contacts based on the node (social) similarity, and forwards messages to nodes with a higher similarity with the destinations, thus reducing messages forwarded to globally popular nodes.

As opposed to [26] [20] [31] which focus on improving the calculation of destination-dependent (DD) utility metrics, our proposed scheme TraLDA chooses to improve the computation of node popularity in the network, since as noted in [16], this destination-independent (DI) utility metric primarily contribute to the traffic imbalance among nodes in mobile social networks. In social network analysis, Freeman [32] proposed three distinct centrality measures to identify the importance of nodes (individuals) in social networks, namely degree centrality, betweenness centrality, and closeness centrality. Degree centrality is the number of direct neighbours or friends a node has; betweenness centrality is the number of shortest paths connecting any two nodes that pass through a given node; and closeness centrality is the average distance (proximity) between a node and all other nodes in the network. Freeman's centrality metrics have been widely used to detect nodes which are capable of disseminating information in mobile social networks; for example, BubbleRap [21] and SimBet [20] consider degree centrality and betweenness centrality, respectively, computed in a distributed, ad-hoc fashion to determine node popularity. In

Formatted: Font: Italic

Formatted: Font: Italic

Formatted: Font color: Red

BubbleRap, node degree is calculated as the cumulative average of total number of distinct peers encountered by the node in all previous time windows. In SimBet, node betweenness centrality is computed based on a binary model of a social relation, i.e., a value of “1” means two nodes know each other, and “0” otherwise. However, we argue that the node popularity or centrality calculations in BubbleRap and SimBet do not cope with the dynamics of a social network. Furthermore, as confirmed in [18,19] human activity typically exhibits a regularity (periodicity) pattern. Considering this matter, as our first contribution in this paper, we propose a novel method to calculate node inherent popularity at a given time interval based on the Kalman prediction [17] which takes into account the node’s periodicity behaviour.

Nevertheless, Freeman’s centrality measures typically disregard the influence of the neighbours. The authors of [33], [Rusi-Nowiska](#), argued that a node’s importance in the social network should also be determined by the importance of its neighbours. In [34], [page6Dom](#), the authors studied a strategy to find persons that are able to spread advertisements as far as possible in a social network. They showed that a person that receives highly respects from her friends, her advertisements will be highly probable to spread over the social network quickly. In addition, Ursino and Virgili [35], [x](#) integrated the concept of social networks and IoT to determine the reputation of IoT objects. They proposed a formula to calculate reputation of an object in a social Internet of Things based on the well-known Google PageRank. In that technique, the reputation of an object is determined by the level of trust it obtains from other IoT objects. Almost similar, Caeteruccio *et al.* [36], [x](#) attempted to introduce concepts and behaviours of social networks into the IoT settings. In that work, to measure the reputation of an IoT object, the authors defined Impact Degree, calculated as the average trust degree that the object receives from the other objects in its scope (neighbourhood). Meanwhile, from the social network theory, there exist centrality measures that consider a richer range of direct and indirect influence of neighbours, such as the Katz’s prestige measure [37]. This centrality metric is developed based on the premise that a node’s importance in the network is influenced by its neighbours’ importance. Thus, this prestige measure considers a node’s connectedness to other nodes as well as its proximity to other important nodes. In this regard, node popularity calculation in TraLDA should take into account the influence of more popular neighbours when determining the popularity of a node. Therefore, as our second contribution in this paper, we propose a method to calculate node social-relations popularity based on the Katz’s prestige measure [37]. We perform some modifications on the calculation of this centrality metric to make it appropriate for distributed, ad hoc environments, such as mobile social networks.

In addition to buffer state metrics, researchers also search for better connection measures to improve fairness in MSNs; for instance, the authors of SimBet [21] add connection strength information to the routing metrics to offload traffic from popular nodes; FairRoute [16] uses two distinct temporal interaction strength metrics to accurately estimate the pairwise connection strength; Socially-Aware Prediction (SAP) [22] estimates future contacts based on the encounter history and social network information and forwards messages to nodes with a higher contact chance with the destination, thus reducing messages forwarded to globally popular nodes.

Social-based routing algorithms are a class of utility-based routing algorithms. In such routing schemes, heuristic methods are used to determine the “quality” (utility) of a node as a relay. Each node i retains $U_i(j)$, a utility function that denotes the likelihood of i delivering a message to j . The utility function can be based on some different parameters, such as contact history, mobility model, social relations, etc. Furthermore, Spyropoulos *et al.* [23] categorized utility functions into two types: destination-dependent (DD) and destination-independent (DI). In DD, node utility is dependent of the destination; i.e., node i is an optimal relay for one destination d_x , yet node j is the best one for another d_y , or $U_i(d_x) > U_i(d_y)$, but $U_i(d_y) < U_j(d_y)$ for $d_x \neq d_y$. DD functions could be based on last contact, social similarity, or correlated mobility pattern, with the given destination. However, DD

Formatted: Font color: Red

Formatted: Font color: Red

Formatted: Font: Italic

Formatted: Font color: Red

imposes a large overhead on nodes, since the nodes should keep a single entry for each peer in the network. As opposed to DD, node utility in DI is independent of any destination, for example, a single node may be the best carrier for most/all destinations in the network, or in general it holds that $U_i(d_x) > U_j(d_x)$ then $U_i(d) > U_j(d)$ for most/all j, d . Instances of nodes which are better relays for all destinations would be those with many connections to others (e.g., hub nodes in scale-free networks), nodes with many acquaintances (e.g., popular nodes in social networks), or nodes with high mobility (e.g., cars or buses in VDTN). Nevertheless, DI imposes a higher forwarding overhead on better relays, leading to poorer fairness in both traffic load distribution and utilization of the node resources.

This paper proposes a framework called *Traffic Load Distribution Aware* (TraLDA), aiming to improve fairness in forwarding of social-based routing algorithms. Here, we introduce a novel computation of node popularity in the entire network. This utility metric is obviously independent of the message destination, and as noted above it might contribute to a traffic load imbalance across MSN nodes. In TraLDA, we consider two different popularities in the calculation of node global popularity, namely *inherent popularity* and *social-relations popularity*. Inherent popularity is based solely on the node's sociability level, and in TraLDA is computed using the Kalman prediction [24] which considers the periodicity in human behaviour. Moreover, the works in [25,26] have confirmed that human activities typically exhibit some of periodicity. Consequently, the calculation of node popularity in MSNs should consider this characteristic. Social-relations popularity, on the other hand, reflects the social benefit of connections with popular nodes, and spreads the popularity of these nodes to their lower ranked acquaintances. Finally, we apply TraLDA on the classical, yet prominent social-based routing algorithms SimBet [21] and BubbleRap [27], and next investigate the performance improvements of these schemes, particularly in the trade off between forwarding fairness and efficiency. SimBet and BubbleRap combine two different utility metrics to decide node fitness as relay to a given destination: the one which is dependent of the destination (i.e., similarity and community in SimBet and BubbleRap, respectively), and the other one which is independent of the destination (i.e., betweenness centrality and global popularity in SimBet and BubbleRap, respectively). TraLDA, in turn, focuses on improving the calculation of global popularity and centrality in BubbleRap and SimBet, respectively.

The following are the main contributions we made in this paper:

- To increase fairness in forwarding of social-based routing algorithms in MSNs, we propose a framework called Traffic Load Distribution Aware (TraLDA). In TraLDA, we offer a new method for calculating node global popularity, a function of both inherent and social-relations popularity.
- The inherent popularity of a node is solely determined by the node's own mobility pattern or sociability level in the network, and in TraLDA is computed using the Kalman prediction, which accounts for the regularity (periodicity) of human behaviour.
- Node social relation popularity, on the other hand, represents the advantages of connections with the more popular or central nodes (individuals). It shares the popularity of more popular nodes to their less popular counterparts.
- Finally, we apply TraLDA on the calculation of node popularity and centrality in BubbleRap and SimBet, respectively, in order to improve the traffic load balancing across network nodes. Using extensive simulations in the ONE [28] environment driven by realistic human mobility scenarios, we show that TraLDA enhances fairness in forwarding of both schemes, without decreasing the overall delivery performances.

We proceed in this paper as follows. Background is described in Section 2, detailed design strategy of TraLDA is discussed in Section 3, simulation and discussion is presented in Section 4, and lastly conclusion and future works is showed in Section 5.

23. Research Background

In this section, we discuss the topology structure of MSNs-mobile social networks and the forwarding strategy of social-based routing algorithms. We initially consider an opportunistic network with N nodes as a graph $G(V, E)$, where V and E are the sets of nodes and links, respectively. In this graph, a link between two nodes represents the physical contact between them, and the link weight is defined as the probability of their pairwise contact. We assume the graph G is connected, that is, between any pair of nodes at least a single path exists. Further, the message dissemination in the graph G under a utility-based routing is formulated as a discrete-time Markov chain. Suppose that a message m is transferred hop-by-hop in this graph. Initially, a message m is in state i if it is carried by node i , and when a contact occurs between node i and j and suppose that i transfers the message m to j , then the state of m changes from i to j . Therefore, the forwarding procedure of a message in an opportunistic network can be modelled as a state transition process in a discrete-time Markov chain. Next, we develop a transition probability matrix P , with p_{ij} denotes the probability that the message m is transferred from node i to j , and is expressed as follows

$$p_{ij} = p_{ij}^c \cdot p_{ij}^f \quad (1)$$

where p_{ij}^c is the probability of encounter between i and j , and p_{ij}^f is the likelihood that i transfers the message m to j during the contact. Node contact probability in MSNs-mobile social networks is directly related with the human mobility pattern, and in some papers, such as [5,38], it was characterized based on the structural properties of node contacts. Yet, forwarding probability fully depends on the forwarding rules used in message routing. In the following, we analyze the topology characteristics of MSNs-mobile social networks as well as the forwarding features of social-based routing schemes, and discuss how the combination of them may result in the unfairness in forwarding among network nodes.

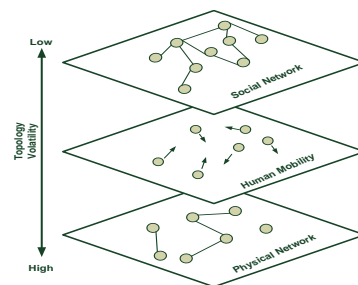


Figure 1. A MSN's-mobile social network's structural topology. On the top layer, the social network drives human to move, and this human mobility creates opportunistic contacts in the physical network.

23.1. Topology structures of MSNs-mobile social networks

When analyzing the delivery performance of a routing algorithm, information of network topology is typically needed. The movement patterns of nodes in mobile networks, e.g., MANETs and OMNs, have a direct impact on the networks' topologies. MSNs-Mobile social networks, in particular, are human-based networks, and node encounters in such networks represent the ways in which people interact. Yoneki *et al.* [38] and Hossmann *et al.* [5] studied the topology characteristic of mobile MSNs-social networks using some realistic human mobility scenarios. They firstly aggregated the contact data to establish

Formatted: Justified

weighted contact graphs, where the link weights express the duration of contact of pairs of nodes. These graphs in turn exhibit the characteristics of social networks. (A social network is a graph of human relationships formed by one or more types of interdependencies, such as mutual interests, kinship, or friendship). By applying a complex network analysis on the derived graphs, they concluded that the networks have a non-random (heterogeneous) connectivity structure, exhibiting a power-law degree distribution in which some nodes have a relatively large connectivity degree to other nodes, whereas the majority of nodes in the network have few. The large degree nodes (so-called *hub nodes*) are the most popular (central) nodes in the social graph, and therefore they can act as information brokers which are capable of disseminating messages to all nodes within a relatively short delay. In Fig. 1 we show the structural topology of an *MSNmobile social network*: a virtual social network exists on top of an *MSNmobile social network*, which is less volatile than the physical network, and this network guides humans to move.

Additionally, we conduct an online analysis in the ONE simulator [22] to investigate the node popularity distribution in *real MSNmobile social networks*. A node in a self-organizing networks like such as *MSNs-mobile social networks* should be able to sense its own popularity throughout the network. Here, node popularity is defined as the number of different nodes contacted in a certain time window. In an aggregated contact graph, this corresponds to node degree (centrality) [21]. In this study, we consider the Reality contact traces [39] as the mobility scenario. In Fig. 2 (left) we show the node degree distribution in Reality, where the degree of a node is computed in a 6-hour-time-window basis. It is evident that some nodes have a degree value that is significantly larger than the network's average degree (i.e., ≈ 2.2). Furthermore, in Fig. 2 (right) we show the *node degree distribution* in the Reality scenario on a log-log scale. The graphic shows that the node degree distribution follows a power-law distribution, with a low probability of finding nodes with a high degree because most network nodes have a low one. Moreover, The authors of [40] established the potential of coupling between *MSNs-mobile social networks* and scale-free networks, which have a power-law degree distribution as their main characteristic. Thus, in other words, the degree distribution in real human-based networks differs from the Gaussian (normal) degree distribution commonly assumed in random

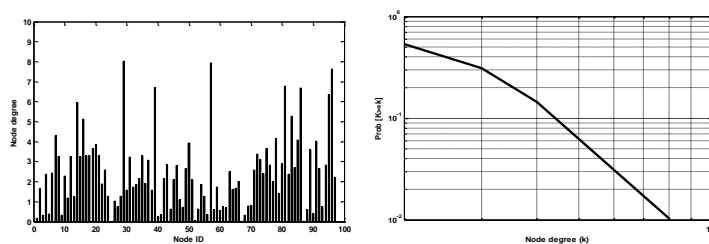


Figure 2. (left) the node degree distribution in the Reality mobility scenario, and (right) when it is plotted in a log-log scale. The almost linear of the plot of the node degree in the log-log scale verifies that the node degree is power-law distributed.

networks.

23.2. Social-based routing algorithms

Social-based routing schemes typically define a utility metric for each node when making routing choices. Clearly, a higher utility reflects a higher chance of the node to deliver a message. The method forwards the message to the contacted node with a higher utility in each contact. This best next-hop heuristic forwarding p_{ij}^f can be described as

$$p_{ij}^f = \begin{cases} 1, & U_i < U_j \\ 0, & U_i > U_j \end{cases} \quad (2)$$

Nevertheless, the utility-based routing algorithms in [MSNs-mobile social networks](#) have some drawbacks as follows:

- Hill-climbing heuristic forwarding is a pure greedy approach that sends the message to the nodes with the highest utility at each contact ([hop](#)). [Fan et. al. \[11\]](#) used a Markov model to show that under this forwarding technique, the probability of a message reaching the greatest utility node(s) is one, implying that messages will always find the highest utility nodes in [MSNs-mobile social networks](#). Furthermore, in the following we show mathematically that the forwarding heuristic, which is biased towards higher value nodes, guides the routing algorithm to send the bulk of network traffic through the highest utility node(s) as follows. We first assume a routing strategy that determines the next-hop nodes in a random manner. The message forwarding is therefore a random walk over the graph $G(V, E)$ mentioned above, with the transition probability matrix P , where its element p_{ij} is defined in (1). Under this random forwarding, p_{ij} is equal to the inverse of node i 's degree d_i , or $p_{ij} = 1/d_i$. In a steady state traffic flow, the chance to find a message m in node j , which also equals to j 's traffic load, can be computed as the first eigenvector of the distribution matrix Π^T , with $-\pi_{ij} = p_{ij} \cdot -(\sum_j p_{ij})^{-1}$. Then, it is easy to see that the eigenvector for distribution matrices of networks with a non-random (heterogeneous) connectivity distribution like [MSNs-mobile social networks](#) will be skewed towards the highly connected nodes (hub nodes) under this random scheme. [ThereforeEventually](#), this confirms the natural traffic load imbalance in the [MSNs-social networks](#). Further, if the forwarding strategy is not random, but biased towards connectivity (i.e., favouring nodes with a higher degree), the probability of hub nodes receiving relay traffic increases and the traffic load distribution becomes more unbalanced. [MoreoverFurthermore](#), using simulation in the Reality [mobility](#) scenario [39] we [show-illustrate](#) in Fig. 3 (left) the node degree vs. node traffic load when the hill-climbing heuristic forwarding is [used-applied on the network](#) (here, node traffic load is defined as the total relay messages carried by a node). The graphic depicts [how](#)-a few the highest degree nodes handle a big portion of traffic, yet most of network nodes only process a small one. This quickly depletes the hub nodes' constrained resources like power and storage. For instance, we show in Fig. 3 (right) the buffer occupancy changes of illustrative hub node and non-hub node in Reality. [Clearly](#), [The-the](#) buffer occupancy in the hub node is regularly saturated, whereas the buffer queue on the non-hub node is normally low during the experiment.

- In *MSNs* mobile social networks, node utility can change over time, and a low utility node at the present time could become a good relay in the future. Most conventional utility-based forwarding algorithms, however, often ignores this. Furthermore, the studies in [18,19] showed that node *degree-popularity* in human-based networks, such as *MSNs*, varies over time and has a periodic pattern. Considering this, when TraLDA calculates node popularity, these features will be taken into account.

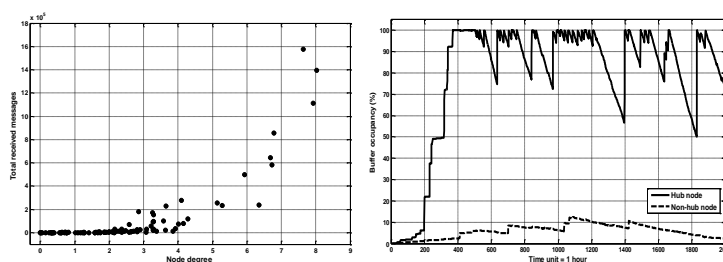


Figure 3. (left) node degree vs. node traffic load, and (right) the buffer queue growths of illustrative hub node and non-hub node, when the hill-climbing heuristic forwarding is applied in the mobile social network on the Reality mobility scenario. This describes an imbalanced traffic load among nodes, with the highest degree nodes handling the bulk of network traffic, resulting in significant buffer occupancy throughout the simulation.

Formatted: MDPI_5.1_figure_caption, Indent: Left: 0.25 cm

3.4. TraLDA Design

In TraLDA, we improve the computation of node (global) popularity in *MSNs* mobile social networks. To determine a node's popularity, two popularity metrics are calculated: *inherent popularity* and *social-relations popularity*. We hypothesize that inherent popularity is purely determined by the node's own mobility pattern or sociability level, whereas social-relation popularity is derived as an advantage from relationships with more popular nodes. Finally, TraLDA uses both popularity indicators to choose optimal relays during contacts. In the following, the computations for both measures are described in detailed.

3.4.1. Inherent popularity calculation

The inherent popularity of a node is determined by its own sociability degree or *network-movement* pattern. In practice, this metric is defined based on a particular metric, such as the total contacts with different nodes in a time interval [21] or the neighbour change rate [38,41]. In the literature, the former is denoted as the node degree in an aggregated encounter graph. In TraLDA, we use node degree to quantify a node's inherent popularity. Moreover, our investigation below shows that node degree in *realistic MSNs* mobile social networks fluctuates significantly over time and exhibits some of periodicity. Therefore, it is important to take into account these features when *computing* calculating node degree at a *given* time. Finally, we introduce a novel calculation of node degree using the Kalman-prediction [17] which consider the periodicity of human behaviour.

We begin by looking into the node degree change characteristics in *MSNs* mobile social networks using *real-world* human movement cases. The Reality trace dataset [39] is used in this study because it consists a large number of nodes and spans a lengthy period of time. Furthermore, an instantaneous node degree is estimated by the number of distinct nodes contacted in a given time window. In the case of Reality, we chose a time

window of 6 hours as the basis for node degree calculation based on a study in [21] that found that individuals' daily life is typically separated into four main periods of 6 hours each: morning, afternoon, evening, and night (however, for a detailed discussion of the impact of time window scale choices on the node degree calculation, see [42]).

We now depict changes in node degree in the Reality scenario; for instance, in Fig. 4 (left), we present the node degree variations of an illustrative hub node in Reality. We notice that the node's degree changes dramatically and rapidly over time. Subsequently, we use a periodogram analysis [43] to find the main periods (frequencies) within the node's degree data series. We display the discovered periodicities of the hub node's degree in Fig. 4 (right). The figure clearly shows that the degree of the hub node firmly demonstrates a 7-days (weekly) period (moreover, our investigation on all the nodes in Reality finds that majority of the nodes possess a weekly cycle of their popularities as well). Indeed, the Reality dataset logged MIT staff and student activities on campus, which are higher during the weekdays but lower on weekends due to less interactions. Nevertheless, depending on the experimental setting, distinct human encounter datasets may have different periodicities.

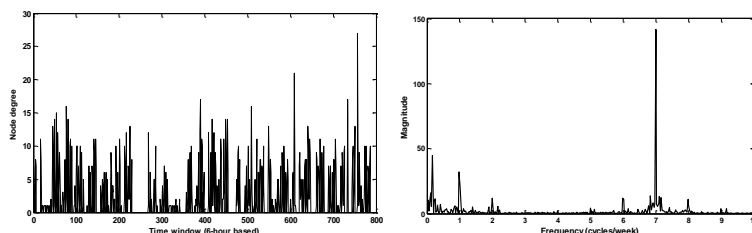


Figure 4. (left) the changes of node-degree of an illustrative hub node in Reality (measured by node degree in a 6-hour time window), and (right) the detected periodicities of the node's degree. This describes that the node popularity in the mobile social network fluctuates over time and has a weekly period.

The structural component of the node degree data series in Fig. 4 (left) is then observed using a discrete time series analysis. A discrete time series is a set of observations y_t logged regularly at a specific time interval. In the traditional decomposition model [44], y_t can be broken down into a trend component, a seasonal (periodic) component with period d , and a random noise component. We apply a seasonal filter [45] to the supplied given data series to get estimated periodic data: in Fig. 5 (upper), we present the long-term seasonal data of the data series; Finally, by removing the periodic data from the original data, deseasonalized data is obtained (shown in Fig. 5 (lower)). -deseasonalized data (shown in Fig. 5 (lower)) is obtained by removing this periodic data from the

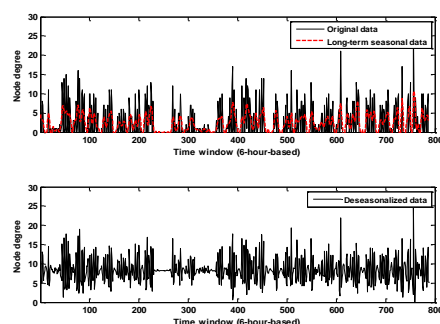


Figure 5. (upper) long-term seasonal data, and (lower) deseasonalized data of the hub node' degree in Fig. 4. These figures show that node popularity in mobile social networks typically comprises a periodic (seasonal) component along with a random noise component.

original data, consisting of a random noise element and a less obvious trend element.

Based on the previous analysis, we now use the Kalman-filter theory [17] to develop an estimation model of the time series data to compute a node's inherent popularity in a time interval. The Kalman filter is widely used in control system design to estimate unmeasured process conditions. It can calculate the best estimates of the current states of a dynamic system defined in a state vector. The state is updated based on periodic observations of the system. We use a typical state space model [46] to express the problem in our

model. Furthermore, we only investigate the case when a seasonal component dominates the time series (see [47] for the discussion of Kalman-prediction for a complete model). The state space model is constituted by two scalar equations, namely *the observation equation* and *the state equation*. For our model with (only) a seasonal component, the observation equation is given as follows

$$y_t = S_t + W_t, \quad t = 1, 2, \dots \quad (3)$$

where S_t is a state variable and W_t is an additive white noise with zero mean and variance σ_w^2 ($W_t = WN(0, \sigma_w^2)$). Furthermore, when we consider S_t representing a seasonal component with a period d such that $S_{t+d} = S_t$ and $\sum_{t=1}^d S_t = 0$, it is therefore possible to determine S_{t+1} as

$$S_{t+1} = -S_t - S_{t-1} \dots - S_{t-d+2} \quad (4)$$

For a more general expression of S_t allowing random deviations to exist in the periodicity, a white noise term V_t ($V_t = WN(0, \sigma_v^2)$) is added in the right hand side of (4). Afterwards, regarding only the seasonal effect on the series, in order to obtain the state equation for our model, we introduce $(d-1)$ dimensional state vector \mathbf{X}_t defined as

$$\mathbf{X}_t = [S_t \quad S_{t-1} \quad \dots \quad S_{t-d+2}]^T \quad (5)$$

and the series S_t is determined as

$$S_t = [1 \quad 0 \quad 0 \quad 0 \quad \dots \quad 0] \mathbf{X}_t \quad (6)$$

For the purpose of the derivation of Kalman-prediction, the observation equation in (3) is now rewritten in a general form as follows

$$Y_t = G_t \mathbf{X}_t + W_t \quad (7)$$

with $G_t = [1 \quad 0 \quad 0 \quad 0 \quad \dots \quad 0]$, and \mathbf{X}_t satisfies the state equation

$$\mathbf{X}_{t+1} = F_t \mathbf{X}_t + \mathbf{V}_t \quad (8)$$

with $\mathbf{V}_t = [\sigma_v^2 \quad 0 \quad 0 \quad \dots \quad 0]^T$, and $F_t = \begin{bmatrix} -1 & -1 & \dots & -1 & -1 \\ 1 & 0 & \dots & 0 & 0 \\ 0 & 1 & \dots & 0 & 0 \\ \vdots & \vdots & \dots & \vdots & \vdots \\ 0 & 0 & \dots & 1 & 0 \end{bmatrix}$

Given the observation equation in (7) and the state equation in (8), the recursive equations of Kalman-filter for the estimation of the values of the series are defined as follows. Considering the initial settings as

$$\hat{\mathbf{X}}_1 = P((\mathbf{X}_1 | Y_0)) \quad (9)$$

$$\Omega_1 = E((\mathbf{X}_1 - \hat{\mathbf{X}}_1)(\mathbf{X}_1 - \hat{\mathbf{X}}_1)^T) \quad (10)$$

the Kalman recursive equations are then given as

$$\hat{\mathbf{X}}_{t+1} = F_t \hat{\mathbf{X}}_t + \theta_t \Delta_t^{-1} (Y_t - G_t \hat{\mathbf{X}}_t) \quad (11)$$

$$\Omega_{t+1} = F_t \Omega_t F_t^T + Q_t - \theta_t \Delta_t^{-1} \theta_t^T \quad (12)$$

where $\Delta_t = G_t \Omega_t G_t^T + R_t$, $\theta_t = F_t \Omega_t G_t^T$, $Q_t = \begin{bmatrix} \sigma_v^2 & 0 & \dots & 0 \\ 0 & \sigma_v^2 & \dots & 0 \\ \vdots & \vdots & \ddots & \vdots \\ 0 & 0 & 0 & \sigma_v^2 \end{bmatrix}$, and $R_t = \sigma_w^2$.

As an example of node popularity estimation using the Kalman-prediction, we show in Fig. 7 the Kalman estimates of the hub node's degree compared with the actual values of the node degree in the Reality mobility scenario (for the detail implementation of the Kalman-prediction on the node degree calculation in the ONE simulator, please refer to <https://github.com/soelistijanto/TraLDA/routing/community/KalmanDegree.java>).

3.4.2. Social-relations popularity calculation

An individual can gain (social) benefits from relationships with his/her more central or popular acquaintances in a social network. Depending on the substance of the relations, measures of node centrality can be classified as undirected (symmetric) relations, such as friendship and kinship, or directed (asymmetric) relations, such as choice and influence. Moreover, in directed graphs centrality is known as "prestige" [48], where the direction of the interaction is a key attribute for this metric. For instance, individuals who are picked as friends by many others have a special status – prestige in the group. In the literature, there exist metrics of prestige which consider both direct and indirect social influences. For instance, the centrality measures in [37,49] are based on the assumption that the importance of a node in the network is determined by the importance of its neighbours. Thus, these metrics take into account both a node's connectivity to other nodes and its proximity to other important nodes.

We now mention one of the widely used centrality measures, the Katz's prestige measure [37]. This defines the prestige of node i in the graph G , denoted by $C_{Katz}(i)$, as the sum of the prestige of all i 's neighbours divided by their degrees. Node i therefore gains its prestige from having a neighbour j with higher prestige. This i 's prestige is however corrected by the number of neighbours of j , so if j has more relations, then i gains less prestige from friendship with j . This adjustment might be thought of correcting for i 's time spent with or relative access to j . As a result, node i 's Katz centrality in the graph G is determined as follows:

$$C_{Katz}(i) = \sum_{j \neq i} g_{ij} \frac{C_{Katz}(j)}{d_j} \quad (13)$$

where $g_{ij} = 1$ if there is a relation between i and j , or "0" otherwise, and d_j is the degree of j representing the number of j 's neighbours.

Inspired by the Katz's centrality measure, we introduce social-relations popularity, the node's popularity derived from relationships with more popular nodes. This distributes the popularity of more (socially) important nodes to their less important neighbours, and thus takes neighbours' popularity into account when calculating a node's popularity. We employ (13) to compute a node's social-relations popularity in a given time interval window as follows. To begin, we suppose that social influence occurs in only one direction, with nodes with lower popularity can only receive social benefits from their more popular neighbours; for instance, from (13) we can deduce influence from j towards i , denoted by $\vec{g}_{ji} = 1$, exists when $C_{Katz}(j) > C_{Katz}(i)$ or "0" otherwise, and therefore $\vec{g}_{ji} \neq \vec{g}_{ij}$. Second, we assume that the popularity of a more important node is shared by its less important neighbours and is weighted by the strength of their interactions with the given node. As a result, the higher (social) level node gives more effect on the closer neighbours. Finally, the social-relations popularity of node i in time window t is defined as follows

$$P_{soc}^t(i) = \sum_{j \in F(i)} \frac{\vec{g}_{ji} \cdot w_{ji}}{\sum_{k \in F(j)} \vec{g}_{jk} \cdot w_{jk}} \cdot \bar{P}_{global}^t(j) \quad (14)$$

where \vec{g}_{ji} denotes the presence of a (social) influence of j towards i : $\vec{g}_{ji} = 1$ for $\bar{P}_{global}^t(j) > \bar{P}_{global}^t(i)$, or =0 otherwise, $F(i)$ represents the set of i 's friends, w_{ji} is the

connection strength of i and j , and $\bar{P}_{global}^t(j)$ is the cumulative mean of global popularity in time window t calculated as follows

$$\bar{P}_{global}^t(j) = \sum_{l=1}^{t-1} P_{global}^l(j) / (t-1) \quad (15)$$

where $P_{global}^t(j)$ is the instantaneous global popularity of j in time window t computed using (16) below.

To give an example of the calculation of node social-relations popularity, we consider a simple neighbourhood of node A in Fig. 6, comprising 4 neighbours with different levels of global popularity at a time t . Between a pair of nodes A and B , a black line indicates the social connection between them, with w_{AB} represents their connection strength (e.g., measured in total contact duration (seconds)). A red dotted vector, on the other hand, denotes the influence of node B to A : $\vec{g}_{BA} = 1$ if $\bar{P}_{global}^t(B) > \bar{P}_{global}^t(A)$, and $=0$ otherwise. Finally, the social-relations popularity of node A at time t is calculated as:

$$P_{soc}^t(A) = \frac{\vec{g}_{BA} \cdot w_{BA} \cdot \bar{P}_{global}^t(B)}{\vec{g}_{BA} \cdot w_{BA} + \vec{g}_{BC} \cdot w_{BC}} + \frac{\vec{g}_{CA} \cdot w_{CA} \cdot \bar{P}_{global}^t(C)}{\vec{g}_{CA} \cdot w_{CA} + \vec{g}_{CB} \cdot w_{CB}} + \frac{\vec{g}_{DA} \cdot w_{DA} \cdot \bar{P}_{global}^t(D)}{\vec{g}_{DA} \cdot w_{DA} + \vec{g}_{DE} \cdot w_{DE}} + \frac{\vec{g}_{EA} \cdot w_{EA} \cdot \bar{P}_{global}^t(E)}{\vec{g}_{EA} \cdot w_{EA} + \vec{g}_{ED} \cdot w_{ED}}$$

$$P_{soc}^t(A) = \frac{1 \cdot 2000 \cdot 7}{1 \cdot 2000 + 0 \cdot 1200} + \frac{1 \cdot 800 \cdot 10}{1 \cdot 800 + 1 \cdot 1200} + \frac{0 \cdot 3000 \cdot 3}{0 \cdot 3000 + 0 \cdot 700} + \frac{1 \cdot 2500 \cdot 8}{1 \cdot 2500 + 1 \cdot 700}$$

$$P_{soc}^t(A) = 7 + 4 + 0 + 6.25 = 17.25$$

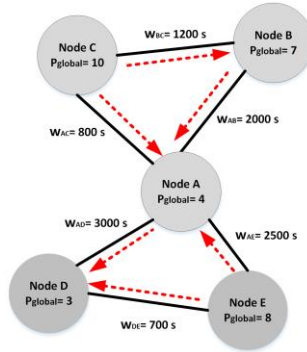


Figure 6. A neighbourhood of node A , comprising 4 neighbour-nodes which can give social influences to node A . Social influences (red dotted vectors) to node A (red dotted vectors) exist when the global popularity of the neighbours is higher than A 's.

3.4.3. TraLDA distributed algorithm

In TraLDA, we combine a node's inherent popularity and social-relations popularity to assess its global popularity. The instantaneous global popularity of node i in time window t , denoted by $P_{global}^t(i)$, is represented by

$$P_{global}^t(i) = P_{inhr}^t(i) + \xi \cdot P_{soc}^t(i) \quad (16)$$

Formatted: Font: Italic

Formatted: Font: Italic

Formatted: Font: Italic

where $P_{inhr}^t(i)$ and $P_{soc}^t(i)$ are node i 's inherent and social-relations popularity, respectively, in time window t , and ξ is a social influence factor which controls the impact of neighbours' influences on the overall i 's popularity and is defined between $0 \leq \xi \leq 1$. When $\xi = 0$, neighbours' influences disappear and the node's global popularity is solely dependent of the node's own behaviour. The metric $P_{global}^t(i)$ is further used by TraLDA to select optimal relays during node contacts.

We now discuss how TraLDA is implemented in a distributed environment. In self-organizing networks like *MSNs* (mobile social networks), a node should be able to perceive its immediate neighbours autonomously. In TraLDA, we use the terminology "familiar set" in [50] to refer to a node's group of friends (direct neighbours) (hereafter, called a *friendship set* F). Every node stores a map of the contacted nodes together with their total encounter times. When the pairwise total contact time surpasses a given friendship threshold F_{th} , the contacted node is added in the given node's friendship set. This implies that the two nodes now have a link, and in turn, we apply a direction and a weight on this connection to indicate the direction of social impact and the strength of the tie between them, respectively. Finally, in Algorithm 1 we describe how to calculate node popularity in *MSNs* using the TraLDA distributed algorithm. When a contact occurs in time window t and the contacted node is in the current node's friendship set, the two nodes exchange two items of data to compute their social-relations popularities: $\bar{P}_{global}^{t-1}(\cdot)$ the mean of global popularity in time window $t-1$, and $ts_{lower}(\cdot)$ the total strength of connections to the less popular neighbours. The latter is computed as $\sum_{k \in F(j)} \bar{g}_{jk} \cdot w_{jk}$, where k is the direct neighbours of j , w_{jk} is the connection strength of j and k , and \bar{g}_{jk} is the existence of influence of j towards k . The current node modifies its social-relation popularity and then recalculates both its instantaneous global popularity and cumulative average global popularity based on this peer's data. When the contact ends, if the contacted node is not in the friendship set yet, then the current node updates a map ($peer, ts(peer)$). Finally, the peer will be added to the friendship set when $ts(peer)$ exceeds the threshold F_{th} . (The implementation of the TraLDA distributed algorithm in the ONE simulator is available online at <https://github.com/soelistijanto/TraLDA>).

Algorithm 1. TraLDA node global popularity calculation (i)

```

require:  $P_{soc}^0(i) \leftarrow 0$ ,  $\bar{P}_{global}^0(i) \leftarrow 0$ 
while  $i$  encounters  $j$  in time window  $t$  do
  /*update current node's global popularity based on the peer's information*/
  if  $j \in F(i)$  then
    send      ( $\bar{P}_{global}^{t-1}(i)$ ,  $ts_{lower}(i)$ )
    receive   ( $\bar{P}_{global}^{t-1}(j)$ ,  $ts_{lower}(j)$ )
    calculate  $P_{soc}^t(i)$  (14)
    calculate  $P_{inhr}^t(i)$  (9) – (12)
    calculate  $P_{global}^t(i)$  (16)
    calculate  $\bar{P}_{global}^t(i)$  (15)
  end if

  /* exchange instantaneous node global popularity */
  send       $P_{global}^t(i)$ 
  receive    $P_{global}^t(j)$ 

  /*when the contact ends*/
  if  $j \notin F(i)$  then

```

```

        update map (j, ts(j))
        if ts(j) > Fth then F(i) ← j
        end if
    end if
end while

```

45. Simulation and Discussion

45.1. Simulation setup

The scenarios of simulations and evaluation metrics considered in the TraLDA's investigation are now discussed. We implement TraLDA and the algorithm benchmarks ~~on~~ in the **Opportunistic Network Environment (ONE)** simulator [22]. For the simulations, we vary the total number of nodes and simulation time dependent of the mobility scenarios. A warm-up phase of 30% of the simulation duration is used to enable nodes to gather information about the network's states. We set the node buffer to 20 MB, while the message size and its TTL are set to 10kB and 7 days, respectively. A new message is generated at a rate of 12 messages per hour at a random node, and is directed to a randomly selected destination. For each algorithm, the simulations are run five times with distinct random number seeds.

For mobility scenarios, we use two realistic, long period of human encounter datasets, Reality [39] and Sassy [51]. In Reality, 100 mobile phones were carried by MIT staffs and students during nine months. The phones were running software that performed Bluetooth device discovery every 5 minutes, logging contacts with nearby Bluetooth-enabled devices. The dataset gathered device contacts in the campus over the given period. The traces were acquired in Sassy, however, utilizing TMote invent devices carried by academics of University of St. Andrews. The invent devices were designed to broadcast beacons every 6.67 seconds to detect other devices within a 10-meter radius. The experiment was conducted for 74 days, where they were asked to bring the devices at all times, whether in or out the town.

For performance evaluation, we utilize the following evaluation metrics:

1. **Delivery ratio**: the ratio of the number of messages delivered to the number of new messages created.
2. **Delivery latency**: the time it takes for a message to be created and forwarded to the intended recipient.
3. **Message overhead ratio**: the fraction between total overhead messages and total delivered messages. The total overhead messages is computed as the number of forwarded messages minus the number of messages successfully delivered
4. **GINI index**: this statistical dispersion measure [52] computes the disparity between values of a frequency distribution. Here, the GINI index is used to quantify the fairness level of traffic load distribution in the network: a value of "0" indicates that traffic is divided equally among network nodes, while a value of "1" indicates that all network traffic is processed by a single node.

4.

45.2. Simulation results and discussions

Formatted: Indent: Left: 5.35 cm, No bullets or numbering

We now present the simulation results and discussions of the **delivery** performances of conventional BubbleRap [21] (hereafter, called *BubbleRap*) and conventional SimBet [20] (hereafter, called *SimBet*) compared with their improved versions within the TraLDA framework (hereafter, called *Bubble-TLDA* and *SimBet-TLDA*, respectively) in the given mobility scenarios, Reality and Sassy.

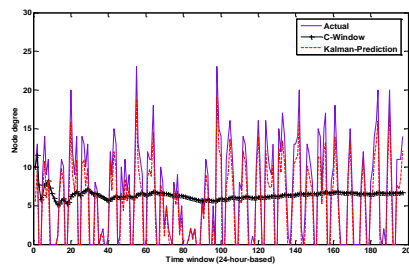


Figure 67. Node degree values of an illustrative Reality hub node in a certain time window, comparing the actual value, the Kalman prediction, and the C-Window estimate. Kalman-prediction clearly outperforms C-Window when estimating the actual node's degree level in each time window, and it captures the periodic pattern of the node degree quite well.

4.5.2.1. BubbleRap vs. Bubble-TLDA

BubbleRap bases its routing on both node global popularity and the community to which the destination belongs to. When either the current node or the encountered node is in the destination's community, routing **choices-decisions** are performed based on local popularity, **which is** the popularity of **a-the** node within **a-given** given community; otherwise, global popularity is considered. In BubbleRap, the C-Window method is used to compute node global popularity. This method calculates a node's degree value in the current time window by simply taking the average of all the node's degree values in prior time windows, which is a cumulative mean of all node degree values in prior time windows. TraLDA, on the other hand, estimates node inherent popularity in a time window (also measured in node degree) based on the Kalman-prediction, which considers the **regularity-periodicity** of human **activityactivities**. For a performance comparison between two schemes, As an illustration, in Fig. 6-7 we show the time series of an illustrative hub node's degree values in Reality. In **every-each single** time window, the node's degree value is determined based on real measurement (y_t), C-Window (\bar{y}_t), and Kalman-prediction (\hat{y}_t) (we show these values in a daily basis to make them easily observed). For Kalman-prediction, we assume (from Section 3.1) that the seasonality S_t is known with the period of 7 days. Fig. 6-7 shows that Kalman-prediction captures fluctuations in the node degree values, and thus delivers more accurate estimations of the instantaneous node's popularity compared to BubbleRap's C-Window. C-Window reacts slowly to variations in node popularity and ignores the regularity of human activity.

We next discuss the delivery performance of BubbleRap compared with that of Bubble-TLDA in the Reality and Sassy scenarios based on the given evaluation metrics. As we noted above, BubbleRap considers node global popularity and the community of the destination belongs to when making forwarding decisions. To determine the community of a node, For the latter case, we exploit the k -clique community detection in [50] to determine the community of a given node. For the parameters of the k -clique scheme used by both BubbleRap and Bubble-TLDA, for Reality we choose $k=5$ and familiar threshold $T_{th}=250k$ seconds for Reality, and for Sassy $k=3$ and $T_{th}=3k$ seconds. Moreover, For-for the

TraLDA's parameters in Bubble-TLDA, we use two different distinct values of friendship thresholds for each mobility scenario: F_{th} =150k seconds and 300k seconds for Reality, and F_{th} =2k seconds and 3k seconds for Sassy. In addition, for both mobility scenarios, we use a social impact factor (ξ) of 0.8, which determines the weight of neighbours' influences on the overall node's popularity.

As previously mentioned in the node social-relations popularity (Section 4.2), stated, the neighbourhood of a node is defined in terms of a friendship set, with the peer another node being involved in the node's friendship set if their pairwise total encounter time surpasses a given friendship threshold (F_{th}). Indeed, this threshold is critical for TraLDA's performance as it dictates the size of a friendship set of a given node's friendship set, which in turn impacts the node's network-wide social influence in its neighbourhood. For instance, we show in Table-1 we show the comparison of the friendship sets of hub node and non-hub node in the Reality scenario of Reality hub node and non-hub node for different various values of friendship threshold (F_{th}) (in seconds). In the case of hub node, we notice that increasing the friendship threshold F_{th} makes decreases the node's friendship set shrinking (Table-1(a)). This also implies that as F_{th} increases, the spread of social influences of the hub node to its neighbours diminishes. Since a hub node, in general, is more the most active node in the network, it consequently has weaker ties with its neighbours. Furthermore, Granovetter [53] underlined the relevance of weak relationships in information dissemination in social networks. A non-hub node, on the other hand, has stronger relationships to its friends (direct neighbours), and as indicated in Table-1(b) the friendship threshold (F_{th}) in this case has a small influence on the node's friendship set size.

Table 1. The friendship sets of Reality's hub node and non-hub node in Reality for different values of F_{th} .

(a) Node 80 (hub node)		(b) Node 3 (non-hub node)	
F_{th} (s)	Friendship Set (node ID)	F_{th} (s)	Friendship Set (node ID)
150k	[5, 7, 13, 15, 17, 20, 22, 32, 82, 84, 85, 95]	150k	[45, 63, 82, 95, 96]
200k	[5, 7, 13, 17, 20, 22, 32, 82, 84, 95]	200k	[45, 63, 82, 95, 96]
250k	[5, 7, 13, 17, 20, 22, 82, 84, 95]	250k	[45, 63, 82, 95, 96]
300k	[5, 13, 17, 22, 82, 84, 95]	300k	[45, 63, 82, 95, 96]

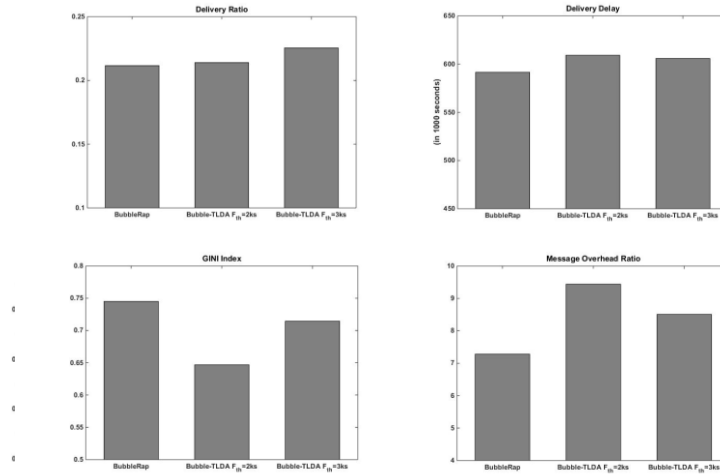


Figure 89. Performance evaluation of BubbleRap and Bubble-TLDA ($\xi=0.8$) for the Sassy mobility scenario. In this case, Bubble-TLDA slightly improves the traffic distribution (indicated by a reduced GINI index), while keeping other delivery performances as high as those of BubbleRap.

Finally, we depict the delivery performances of BubbleRap and Bubble-TLDA in Reality and Sassy in Figs. 7–8 and 89, respectively, based on the four performance metrics mentioned before. For Bubble-TLDA, we consider two distinct friendship thresholds for each scenario: for Reality $F_{th}=150ks$ and $300ks$, but and for Sassy $F_{th}=2ks$ and $3ks$. Since the primary purpose of TraLDA is to enhance fairness in forwarding across network nodes, we notice in these figures that this is achieved: Bubble-TLDA can improve the traffic distribution fairness in both scenarios, indicated by the reduced of GINI index. The improved traffic fairness of Bubble-TLDA has a little impact on the delivery rate, i.e. Bub-

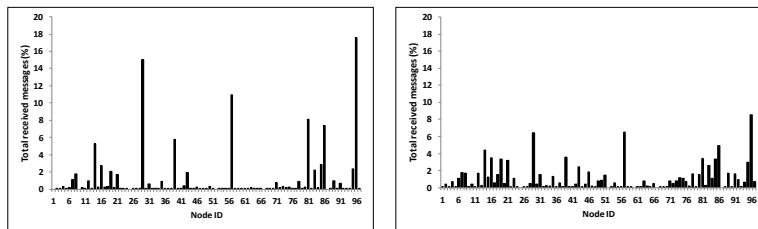


Figure 910. (left) the traffic load distribution among nodes in Reality for BubbleRap, and (right) for Bubble-TLDA ($\xi=0.8$, $F_{th}=150ks$). Clearly, the improved node popularity calculation of TraLDA on BubbleRap significantly reduces the traffic load in the hub nodes, while increasing the relay traffic in majority of non-hub nodes.

ble-TLDA keeps the delivery success rate as high as that of BubbleRap. In addition, Bubble-TLDA with a lower friendship threshold (F_{th}) can give a more significant impact on reducing the GINI index. As mentioned in Table 1, the lower friendship threshold (F_{th}) means the wider influences of hub nodes on their neighbourhoods, resulting in more non-hub nodes can increase their popularity and, in turn, may become better relays. For example, it can decrease the GINI index of BubbleRap, while maintaining the delivery success rate as high as BubbleRap in both mobility scenarios. Additionally, in Fig. 9–10 we show the distribution of traffic load among nodes in Reality for BubbleRap and Bubble-TLDA ($\xi=0.8$, $F_{th}=150ks$). Bubble-TLDA is clearly capable of significantly reducing the relay traffic managed by the most popular nodes (hub nodes), while, on the other hand, simultaneously increasing the total relay traffic handled by most a large number of non-hub nodes, and thereby improving traffic load balancing across network nodes in the network (a lower GINI index compared to BubbleRap as shown in Fig. 7 (lower-left)).

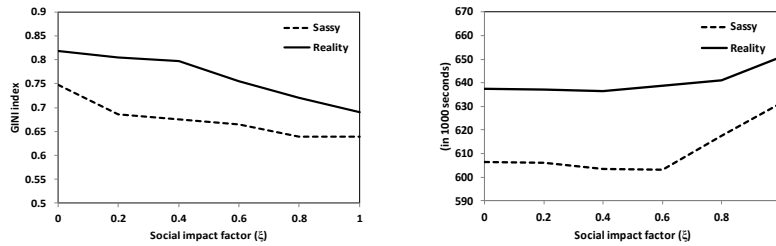


Figure 10. (left) social impact factor (ξ) vs. GINI index, and (right) social impact factor (ξ) vs. delivery latency of Bubble-TLDA for Reality ($F_{th}=150ks$) and Sassy ($F_{th}=2ks$). A social impact factor represents the contribution of neighbours' influence on the node popularity. A higher ξ leads to a lower GINI index, but somewhat increases the delivery delay.

The large-reduction in load in the most popular nodes in the case of Bubble-TLDA, on the other hand, has a negative influence on the delivery latency. In both scenarios Reality and Sassy, as illustrated in Fig. 7–8 and 8–9 (upper-right), Bubble-TLDA increases delivery time beyond that of BubbleRap. Reducing traffic on the hub nodes implies that most of the network traffic is diverted away from the shortest-paths through these nodes, and now traverses on the suboptimal-paths via non-hub nodes which typically longer than the shortest-paths, resulting in a longer delivery time.

Subsequently, we describe investigate the effect of a social impact factor (ξ) on Bubble-TLDA's performance, particularly delivery latency and GINI index. In TraLDA, a social impact factor (ξ) determines the weight of neighbours' influences on the node's global popularity. From (16), when the social impact factor (ξ) decreases, the effect of neighbours' importance on the node's popularity weakens, and thus the node's popularity merely relies on its own mobility pattern or sociability level in the social network. In Fig 10, we depict the impact of varying social impact factor (ξ) on the GINI index and average delivery latency in Reality and Sassy. From (16), when ξ decreases, the effect of social relations popularity in the node's popularity weakens, and thus the node's inherent popularity is more considered. As illustrated in Fig. 10–11 (left), when the social impact factor (ξ) increases, the GINI index in both scenarios decreases, with the reduction is more obvious in Reality. This demonstrated that considering neighbours' popularity influences on the node's global popularity computation indeed improves fairness in forwarding of BubbleRap. However, increasing the social impact factor (ξ) lengthens This demonstrates that

integrating social relations popularity in the node global popularity computation improves fairness in forwarding across network nodes. On the other hand, the growth of ξ improves the delivery delay time in both scenarios. The greater the value of the social impact factor (ξ), the more traffic is redirected from optimal paths (via hub nodes) to sub-optimal paths (through non-hub nodes), which are often longer than the shortest routes (via hub nodes) to the destination. Finally, for the case of message overhead ratio, Bubble-TLDA marginally rises BubbleRap's delivery cost in both mobility scenarios (Fig. 7 and 8 (lower-right)). This implies that reducing traffic in hub nodes, while increasing traffic in non-hub nodes gives a less impact on the delivery overhead, i.e., Bubble-TLDA is able to maintain the total message copies as high as BubbleRap.

4.5.2.2. SimBet vs. SimBet-TLDA

For the last TraLDA's analysis, we now consider SimBet routing [20]. SimBet uses two distinct social properties, namely betweenness centrality and social similarity, to calculate node utility to a given destination. Both the SimBet's utility metrics are calculated based on a binary model of a social connection, where a value of "1" denotes that a pair of nodes have known each other, and "0" otherwise. The binary social relationships may create a substantial issue in forwarding fairness, since a node having large contacts with other nodes will always be considered as the popular nodes regardless of time. Using the graph with binary links, To quantify node centrality, SimBet computes node betweenness centrality based on an ego-centric network approach, since the global network topology information is commonly unavailable for nodes in MSNs. Node social similarity, on the other hand, is calculated as the number of common encountered nodes between a pair of

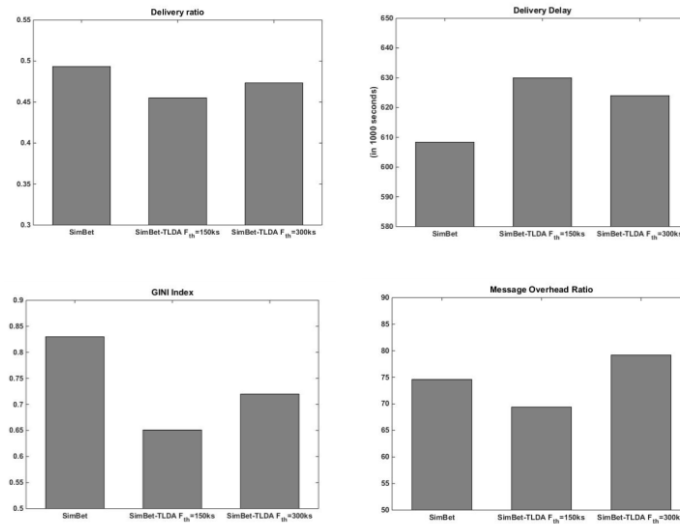


Figure 12. Performance evaluation of SimBet and SimBet-TLDA ($\xi=0.8$) for the Reality mobility scenario. As in the case of BubbleRap, in this case TraLDA is also able to substantially reduce the SimBet's GINI index, without much affecting other delivery performances.

nodes. In the end, a node's SimBet utility of a node is computed as the weighted combination of betweenness centrality and similarity, with a parameter α that which balances the two metrics' respective relevance. Furthermore, for SimBet-TLDA, the SimBet routing within the TraLDA framework, we modify the calculation of node betweenness of SimBet with the calculation of node global popularity of TraLDA using (16). Finally, in Figs. 11 and 12 we depict the delivery performances of SimBet and SimBet-TLDA for Reality and Sassy, respectively. For TraLDA's social-relations parameters, namely friendship threshold (F_{th}) and social impact factor (ξ), we again consider the similar settings used in the previous investigation of Bubble-TLDA. Moreover, for both SimBet and SimBet-TLDA we choose a SimBet's weighting parameter $\alpha = 0.5$, assigning an equal importance to the global popularity and social similarity utilities in both Reality and Sassy.

The major purpose of SimBet-TLDA is to enhance traffic load balancing across network nodes, and as seen in Figs. 11–12 and 12–13 (lower-left) the GINI index performance of SimBet-TLDA can outperform that of SimBet. As previously stated, using binary relationships to calculate node centrality makes a node's utility relatively constant over time, ignoring the dynamics of human behaviour. As a result, majority of network traffic is directed to the most central nodes (hub nodes), creating a traffic imbalance in the network. A node's centrality in SimBet-TLDA, however, is determined by considering both the periodicity of human activities as well as the centrality of the neighbours of the nodes. This can reduce the traffic in the most central nodes and distributes the traffic more equitably across the network nodes, indicated by the reduce of GINI index in both mobility scenarios. Furthermore, The GINI index reduction in SimBet-TLDA is more obvious in the case of a lower friendship thresholds (F_{th}). As described in Table 1, a lower friendship threshold results in this is because with a lower F_{th} , the influence of more popular central nodes are wider in their neighbourhood, and consequently hence, many more less popular central neighbour nodes can increase their popularity and may afterwards can become a good candidate relays now. Moreover, the reduce of GINI index This GINI index reduction, moreover, slightly impacts on the delivery ratio, and SimBet-TLDA delivers the messages to the destinations with a success rate as high as that of SimBet. However, as in Bubble-TLDA, the GINI index decrease reduction in SimBet-TLDA also increases the delivery time in both mobility cases. The explanation of this is similar to that given in the Bubble-TLDA before, as follows: when SimBet-TLDA successfully reduces the GINI index, some of traffic is diverted away from the shortest-paths (through hub nodes) on to the sub-optimal paths (via non-hub nodes); in turn, increasing the average delivery time. Finally, in terms of message-delivery cost/overhead-ratio performance, SimBet-TLDA performs as well as SimBet in both scenarios, i.e., SimBet-TLDA creates (redundant) message copies as many as SimBet in the network.

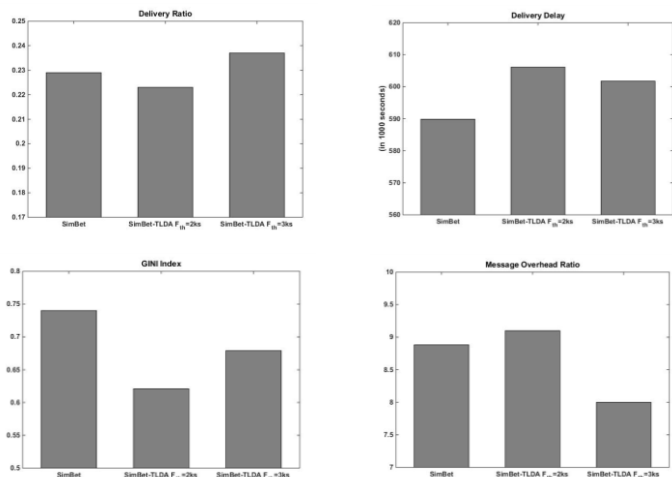


Figure 12. Performance evaluation of SimBet and SimBet-TLDA ($\xi=0.8$) for the Sassy mobility scenario. Similar with the case in Reality, here SimBet-TLDA also improves the traffic fairness in the network (indicated by the reduced GINI index), while keeping other delivery performances as high as those of SimBet.

56. Conclusion

We presented TraLDA, a distributed framework aimed primarily at improving fairness in forwarding among MSN-nodes in mobile social networks. In TraLDA, we introduce a novel calculation of node popularity, a function of inherent and social-relations popularity. We have demonstrated that TraLDA achieves this fairness, reducing the GINI index of BubbleRap and SimBet, but at the expense of a slightly increase of delivery delay of these routing schemes. Given that MSNs-mobile social networks are assumed to be delay-tolerant, the increased delivery latency is a reasonable trade-off given the enhanced network traffic fairness and lower resource use in the most popular nodes.

For future work, we believe that TraLDA can be incorporated with buffer congestion control to further improve traffic load balancing across network nodes and simultaneously avoid congestion mainly in the most popular nodes.

Acknowledgements

This work has been partially supported by the Sanata Dharma University's research grants 2021.

References

- Conti, M.; Giordano, S.; May, M.; Passarella, A. From Opportunistic Networks to Opportunistic Computing. *IEEE Communications Magazine* **2010**, *48*, 126–139, doi:10.1109/MCOM.2010.5560597.
- Cai, Y.; Zhang, H.; Fan, Y.; Xia, H. A Survey on Routing Algorithms for Opportunistic Mobile Social Networks. *China Communications* **2021**, *18*, 86–109, doi:10.23919/JCC.2021.02.007.

- 839 3. Hu, X.; Chu, T.H.S.; Leung, V.C.M.; Ngai, E.C.-H.; Kruchten, P.; Chan, H.C.B. A Survey on Mobile Social Networks:
840 Applications, Platforms, System Architectures, and Future Research Directions. *IEEE Communications Surveys
841 Tutorials* **2015**, *17*, 1557–1581, doi:10.1109/COMST.2014.2371813.
- 842 4. Barbosa, H.; Barthelemy, M.; Ghoshal, G.; James, C.R.; Lenormand, M.; Louail, T.; Menezes, R.; Ramasco, J.J.;
843 Simini, F.; Tomasini, M. Human Mobility: Models and Applications. *Physics Reports* **2018**, *734*, 1–74,
844 doi:10.1016/j.physrep.2018.01.001.
- 845 5. Hossmann, T.; Spyropoulos, T.; Legendre, F. A Complex Network Analysis of Human Mobility. In Proceedings
846 of the 2011 IEEE Conference on Computer Communications Workshops (INFOCOM WKSHPS); 2011; pp. 876–
847 881.
- 848 6. Borrel, V.; Legendre, F.; de Amorim, M.; Fdida, S. SIMPS: Using Sociology for Personal Mobility. *IEEE/ACM
849 Transactions on Networking* **2009**, *17*, 831–842, doi:10.1109/TNET.2008.2003337.
- 850 7. Mtibaa, A.; May, M.; Diot, C.; Ammar, M. PeopleRank: Social Opportunistic Forwarding. In Proceedings of the
851 2010 Proceedings IEEE INFOCOM; 2010; pp. 1–5.
- 852 8. Picu, A.; Spyropoulos, T. Distributed Optimization in DTNs: Towards Understanding Greedy and Stochastic
853 Algorithms. **2010**, 1–19.
- 854 9. Yuan, P.; Pang, X.; Song, M. SSR: Using the Social Similarity to Improve the Data Forwarding Performance in
855 Mobile Opportunistic Networks. *IEEE Access* **2019**, *7*, 44840–44850, doi:10.1109/ACCESS.2019.2908920.
- 856 10. Mtibaa, A.; Harras, K.A. Fairness-Related Challenges in Mobile Opportunistic Networking. *Comput. Netw.* **2013**,
857 *57*, 228–242, doi:10.1016/j.comnet.2012.08.019.
- 858 11. Fan, X.; Li, V.O.K.; Xu, K. Fairness Analysis of Routing in Opportunistic Mobile Networks. *IEEE Transactions on
859 Vehicular Technology* **2014**, *63*, 1282–1295, doi:10.1109/TVT.2013.2282341.
- 860 12. Sun, Y.; Yin, L.; Liu, W. Defending Sybil Attacks in Mobile Social Networks. In Proceedings of the 2014 IEEE
861 Conference on Computer Communications Workshops (INFOCOM WKSHPS); 2014; pp. 163–164.
- 862 13. Helbing, D.; Brockmann, D.; Chadeaux, T.; Donnay, K.; Blanke, U.; Woolley-Meza, O.; Moussaid, M.; Johansson,
863 A.; Krause, J.; Schutte, S.; et al. Saving Human Lives: What Complexity Science and Information Systems Can
864 Contribute. *J Stat Phys* **2015**, *158*, 735–781, doi:10.1007/s10955-014-1024-9.
- 865 14. Jusup, M.; Holme, P.; Kanazawa, K.; Takayasu, M.; Romić, I.; Wang, Z.; Geček, S.; Lipić, T.; Podobnik, B.; Wang,
866 L.; et al. Social Physics. *Physics Reports* **2022**, *948*, 1–148, doi:10.1016/j.physrep.2021.10.005.
- 867 15. Hui, P.; Chaintreau, A.; Scott, J.; Gass, R.; Crowcroft, J.; Diot, C. Pocket Switched Networks and Human Mobility
868 in Conference Environments. In Proceedings of the Proceeding of the 2005 ACM SIGCOMM workshop on Delay-
869 tolerant networking - WDTN '05; ACM Press: Philadelphia, Pennsylvania, USA, 2005; pp. 244–251.
- 870 16. Spyropoulos, T.; Turletti, T.; Obraczka, K. Routing in Delay-Tolerant Networks Comprising Heterogeneous Node
871 Populations. *IEEE Transactions on Mobile Computing* **2009**, *8*, 1132–1147, doi:10.1109/TMC.2008.172.
- 872 17. Kalman, R.E. A New Approach to Linear Filtering and Prediction Problems. *Journal of Fluids Engineering,
873 Transactions of the ASME* **1960**, *82*, 35–45, doi:10.1115/1.3662552.
- 874 18. Hu, F.; Smeaton, A.F.; Newman, E.; Buman, M.P. Using Periodicity Intensity to Detect Long Term Behaviour
875 Change. In Proceedings of the Adjunct Proceedings of the 2015 ACM International Joint Conference on Pervasive
876 and Ubiquitous Computing and Proceedings of the 2015 ACM International Symposium on Wearable Computers;
877 Association for Computing Machinery: New York, NY, USA, 2015; pp. 1069–1074.
- 878 19. Soelistijanto, B.; Adi Permatasari, E.K. Periodicity Detection of Node Behaviour in Opportunistic Mobile Social
879 Networks. In Proceedings of the 2019 IEEE International Conference on Internet of Things and Intelligence System
880 (IoTaIS); 2019; pp. 25–29.

20. Daly, E.M.; Haahr, M. Social Network Analysis for Information Flow in Disconnected Delay-Tolerant MANETs. *IEEE Transactions on Mobile Computing* **2009**, *8*, 606–621, doi:10.1109/TMC.2008.161.
21. Hui, P.; Crowcroft, J.; Yoneki, E. BUBBLE Rap: Social-Based Forwarding in Delay-Tolerant Networks. *IEEE Transactions on Mobile Computing* **2011**, *10*, 1576–1589, doi:10.1109/TMC.2010.246.
22. Keränen, A.; Ott, J.; Kärkkäinen, T. The ONE Simulator for DTN Protocol Evaluation. *SIMUTools 2009 - 2nd International ICST Conference on Simulation Tools and Techniques* **2009**, doi:10.4108/ICST.SIMUTOOLS2009.5674.
23. Shi, H.; Prasad, R.V.; Onur, E.; Niemegeers, I.G.M.M. Fairness in Wireless Networks: Issues, Measures and Challenges. *IEEE Communications Surveys Tutorials* **2014**, *16*, 5–24, doi:10.1109/SURV.2013.050113.00015.
24. Soelistijanto, B. The Efficiency-Fairness Trade-off of Social-Rank-Based Forwarding in Social Opportunistic Networks. In Proceedings of the 2016 IEEE Asia Pacific Conference on Wireless and Mobile (APWiMob); 2016; pp. 113–119.
25. Ying, B.; Xu, K.; Nayak, A. Fair and Social-Aware Message Forwarding Method in Opportunistic Social Networks. *IEEE Communications Letters* **2019**, *23*, 720–723, doi:10.1109/LCOMM.2019.2900892.
26. Pujol, J.M.; Toledo, A.L.; Rodriguez, P. Fair Routing in Delay Tolerant Networks. *Proceedings - IEEE INFOCOM* **2009**, 837–845, doi:10.1109/INFCOM.2009.5061993.
27. Radenkovic, M.; Grundy, A. Efficient and Adaptive Congestion Control for Heterogeneous Delay-Tolerant Networks. *Ad Hoc Networks* **2012**, *10*, 1322–1345, doi:https://doi.org/10.1016/j.adhoc.2012.03.013.
28. Sermpezis, P.; Spyropoulos, T. Understanding the Effects of Social Selfishness on the Performance of Heterogeneous Opportunistic Networks. *Computer Communications* **2014**, *48*, 71–83, doi:https://doi.org/10.1016/j.comcom.2014.03.016.
29. Abdelkader, T.; Naik, K.; Gad, W. A Game-Theoretic Approach to Supporting Fair Cooperation in Delay Tolerant Networks. In Proceedings of the 2015 IEEE 81st Vehicular Technology Conference (VTC Spring); 2015; pp. 1–7.
30. Amah, T.E.; Kamat, M.; Bakar, K.A.; Moreira, W.; Jr., A.O.; Batista, M.A. Measuring Burden and Routing Fairness in Pocket Switched Networks. In Proceedings of the XXXV Brazilian Symposium on Computer Networks and Distributed Systems, [SBRC] 2017, Belém, Brazil, May 15–19, 2018; Abelém, A., Cerqueira, E., Eds.; 2017.
31. Ciobanu, R.I.; Dobre, C.; Cristea, V. Reducing Congestion for Routing Algorithms in Opportunistic Networks with Socially-Aware Node Behavior Prediction. In Proceedings of the Proceedings - International Conference on Advanced Information Networking and Applications, AINA; 2013; pp. 554–561.
32. Freeman, L.C. Centrality in Social Networks. *Social Networks* **1979**, *1*, 215–239, doi:10.1016/0378-8733(78)90021-7.
33. Rusinowska, A.; Berghammer, R.; De Swart, H.; Grabisch, M. Social Networks: Prestige, Centrality, and Influence: (Invited Paper). In *Relational and Algebraic Methods in Computer Science*; de Swart, H., Ed.; Lecture Notes in Computer Science; Springer Berlin Heidelberg: Berlin, Heidelberg, 2011; Vol. 6663, pp. 22–39 ISBN 978-3-642-21069-3.
34. Sheikhamadi, A.; Nematbakhsh, M.A. Identification of Multi-Spreader Users in Social Networks for Viral Marketing. *Journal of Information Science* **2017**, *43*, 412–423, doi:10.1177/0165551516644171.
35. Ursino, D.; Virgili, L. An Approach to Evaluate Trust and Reputation of Things in a Multi-IoTs Scenario. *Computing* **2020**, *102*, 2257–2298, doi:10.1007/s00607-020-00818-5.
36. Cauteruccio, F.; Cinelli, L.; Fortino, G.; Savaglio, C.; Terracina, G.; Ursino, D.; Virgili, L. An Approach to Compute the Scope of a Social Object in a Multi-IoT Scenario. *Pervasive and Mobile Computing* **2020**, *67*, doi:10.1016/j.pmcj.2020.101223.
37. Katz, L. A New Status Index Derived from Sociometric Analysis. *Psychometrika* **1953**, *18*, 39–43, doi:10.1007/BF02289026.

38. Yoneki, E.; Hui, P.; Crowcroft, J. Distinct Types of Hubs in Human Dynamic Networks. In Proceedings of the Proceedings of the 1st Workshop on Social Network Systems; Association for Computing Machinery: New York, NY, USA, 2008; pp. 7–12.
39. Eagle, N.; Pentland, A. Reality Mining: Sensing Complex Social Systems. *Personal and Ubiquitous Computing* **2006**, *10*, 255–268, doi:10.1007/s00779-005-0046-3.
40. Ferretti, S.; Ghini, V.; Panzieri, F. Scale-Free Opportunistic Networks: Is It Possible? In Proceedings of the 2012 IEEE International Conference on Pervasive Computing and Communications Workshops; 2012; pp. 625–630.
41. Musolesi, M.; Mascolo, C. CAR: Context-Aware Adaptive Routing for Delay-Tolerant Mobile Networks. *IEEE Transactions on Mobile Computing* **2009**, *8*, 246–260, doi:10.1109/TMC.2008.107.
42. Williamson, G.; Cellai, D.; Dobson, S.; Nixon, P. Self-Management of Routing on Human Proximity Networks. In Proceedings of the Self-Organizing Systems; Spyropoulos, T., Hummel, K.A., Eds.; Springer Berlin Heidelberg: Berlin, Heidelberg, 2009; pp. 1–12.
43. Stoica Moses, Randolph L., Petre. *Spectral Analysis of Signals*; Pearson/Prentice Hall: Upper Saddle River, N.J., 2005; ISBN 0131139568 9780131139565.
44. Brockwell, P.J.; Davis, R.A. *Introduction to Time Series and Forecasting - Second Edition*; 2002; ISBN 9780387781884.
45. Dagum, E.B. The X-II-ARIMA Seasonal Adjustment Method. **1980**, 119.
46. Durbin, J.; Koopman, S.J. *Time Series Analysis by State Space Methods: Second Edition*; Oxford University Press: Oxford, 2012; ISBN 9780199641178.
47. Musolesi, M.; Hailes, S.; Mascolo, C. Prediction of Context Information Using Kalman Filter Theory. **2004**.
48. Wasserman, S.; Faust, K. *Social Network Analysis: Methods and Applications*; Structural Analysis in the Social Sciences; Cambridge University Press, 1994;
49. Bonacich, P. Power and Centrality: A Family of Measures. *American Journal of Sociology* **1987**, *92*, 1170–1182.
50. Hui, P.; Yoneki, E.; Chan, S.Y.; Crowcroft, J. Distributed Community Detection in Delay Tolerant Networks. In Proceedings of the Proceedings of 2nd ACM/IEEE International Workshop on Mobility in the Evolving Internet Architecture; Association for Computing Machinery: New York, NY, USA, 2007.
51. Bigwood, G.; Henderson, T.; Rehunathan, D.; Bateman, M.; Bhatti, S. {CRAWDAD} Dataset St_andrews/Sassy (v. 2011-06-03) 2011.
52. Gini, C. On the Measure of Concentration with Special Reference to Income and Statistics. *Colorado College Publication, Colorado Springs, General Series* **1936**, *208*, 73–79.
53. Granovetter, M.S. The Strength of Weak Ties. *American Journal of Sociology* **1973**, *78*, 1360–1380.

[Algorithms] Manuscript ID: algorithms-1760905 - Accepted for Publication

riley.song@mdpi.com <riley.song@mdpi.com>

on behalf of

Algorithms Editorial Office <algorithms@mdpi.com>

Mon 6/13/2022 8:07 AM

To: Soelistijanto B <b.soelistijanto@usd.ac.id>

Cc: Vittalis Ayu <vittalis.ayu@usd.ac.id>; Algorithms Editorial Office <algorithms@mdpi.com>; Riley Song <riley.song@mdpi.com>

Dear Dr. Soelistijanto,

Congratulations on the acceptance of your manuscript, and thank you for your interest in submitting your work to Algorithms:

Manuscript ID: algorithms-1760905

Type of manuscript: Article

Title: Improving Traffic Load Distribution Fairness in Mobile Social Networks

Authors: Bambang Soelistijanto *, And Vittalis Ayu

Received: 23 May 2022

E-mails: b.soelistijanto@usd.ac.id, vittalis.ayu@usd.ac.id

Submitted to section: Algorithms for Multidisciplinary Applications,

[https://www.mdpi.com/journal/algorithms/sections/Algorithms for Multidisciplinary Applications](https://www.mdpi.com/journal/algorithms/sections/Algorithms_for_Multidisciplinary_Applications)

Algorithms for Communication Networks

https://www.mdpi.com/journal/algorithms/special_issues/algorithm_communication_network

https://susy.mdpi.com/user/manuscripts/review_info/9e31cd0f502d97b254078bc466855b21

We will now edit and finalize your paper, which will then be returned to you for your approval. Within the next couple of days, an invoice concerning the article processing charge (APC) for publication in this open access journal will be sent by email from the Editorial Office in Basel, Switzerland.

If, however, extensive English edits are required to your manuscript, we will need to return the paper requesting improvements throughout.

We encourage you to set up your profile at SciProfiles.com, MDPI's researcher network platform. Articles you publish with MDPI will be linked to

your SciProfiles page, where colleagues and peers will be able to see all of your publications, citations, as well as other academic contributions.

We also invite you to contribute to Encyclopedia (<https://encyclopedia.pub>), a scholarly platform providing accurate information about the latest research results. You can adapt parts of your paper to provide valuable reference information, via Encyclopedia, for others both within the field and beyond.

Kind regards,
Frank Werner
Editor-in-Chief