

**FACULTY OF INDUSTRIAL TECHNOLOGY INTERNATIONAL CONGRESS**

**(FoITIC)**

**PROCEEDINGS**  
**The 1<sup>st</sup> FoITIC 2017**  
**International Conference**

**ISBN 978-602-53531-8-5**



**Campus of Institut Teknologi Nasional Bandung**  
**West Java – Indonesia**  
**October 9 – 11, 2017**

**Organized**



**Co-organized**



**University Partner**



## Proceedings of FoITIC 2017 – International Conference

### Reviewer:

Dr. Ing. M. Alexin Putra	Mechanical Engineering	Itenas – Indonesia
Dr. Dani Rusirawan	Mechanical Engineering	Itenas – Indonesia
Dr. Dyah Setyo Pertiwi	Chemical Engineering	Itenas – Indonesia
Dr. Jono Suhartono	Chemical Engineering	Itenas – Indonesia
Dr. Marisa Widyastuti P	Electrical Engineering	Telkom University – Indonesia
Dr. Fahmi Arif	Industrial Engineering	Itenas – Indonesia
Dr. Achmad Ghazali	School of Business and Management	ITB – Indonesia
Dr. Winarno Sugeng	Informatics Engineering	Itenas – Indonesia

### Edited by:

Dr. Dani Rusirawan  
Dr. Dyah Setyo Pertiwi  
Dr. Fahmi Arif  
Mr. Liman Hartawan  
Ms. Dina Budhi Utami  
Mr. Muktiadi Akhmad Januar

**Copyright @ 2019 by the FTI – Itenas and the authors**

### Conference Organizer:

Faculty of Industrial Technology, Institut Teknologi Nasional Bandung - Indonesia  
Jl. PKHH. Mustapa No. 23 Bandung 40124, West Java - INDONESIA  
Phone: +62-22- 7272215, Fax: +62-22 – 7202892  
Email: foitic@itenas.ac.id,  
Website: <http://foitic.itenas.ac.id>.  
**[www.itenas.ac.id](http://www.itenas.ac.id)**

**ISBN 978-602-53531-8-5**

All rights reserved. No part of the publication may be produced, transmitted, in any form or by means of electronic, mechanical, photocopying, recording or otherwise, without the permission of the publisher, except the case in critical articles and review or where prior rights are preserved.

**Cover Design:** Aldrian Agusta, S.Sn.,M.Ds.

**Produced by:** Penerbit Itenas



## COMMITTEE

### Organizing Committee:

Chairman	: Dr. Dani Rusirawan	Itenas – Indonesia
Co-chairman	: Dr. Ahmad Taufik Joenoes	Indonesian Society for Reliability
Members	: Dr. Dyah Setyo Pertiwi	Itenas – Indonesia
	Dr. Fahmi Arif	Itenas – Indonesia
	Mr. Liman Hartawan	Itenas – Indonesia
	Ms. Dina Budhi Utami	Itenas – Indonesia
	Mr. Aldrian Augusta	Itenas – Indonesia

### Steering Committee:

Dr. Imam Aschuri	Itenas Bandung – Indonesia
Prof. Dr. Meilinda Nurbanasari	Itenas Bandung – Indonesia
Ms. Yuniar	Itenas Bandung – Indonesia
Dr. Dewi Kania Sari	Itenas Bandung – Indonesia
Prof. Dr. Soegijardjo Soegijoko	Itenas Bandung – Indonesia IEEE Indonesia SSIT Chapter
Dr. Kusmaningrum Soemadi	Itenas Bandung – Indonesia
Prof. Dr. Isa Setiasah Toha	ITB – Indonesia
Dr. Iwan Inrawan Wiratmadja	ITB – Indonesia

### Scientific Committee:

Dr. Hendi H. Rachmat	Electrical Engineering	Itenas – Indonesia
Dr. Waluyo	Electrical Engineering	Itenas – Indonesia
Dr. Marisa Widyastuti P.	Electrical Engineering	Telkom University – Indonesia
Dr. T. Kristyadi	Mechanical Engineering	Itenas – Indonesia
Dr. Agus Hermanto	Mechanical Engineering	Itenas – Indonesia
Dr. Ing. M. Alexin Putra	Mechanical Engineering	Itenas – Indonesia
Dr. Arif Imran	Industrial Engineering	Itenas – Indonesia
Dr. Chandra Ade Irawan	Industrial Engineering	Itenas – Indonesia
Dr. Caecilia S. Wahyuning	Industrial Engineering	Itenas – Indonesia
Dr. Jono Suhartono	Chemical Engineering	Itenas – Indonesia
Dr. Maya Ramadianti M.	Chemical Engineering	Itenas – Indonesia
Dr. rer. Nat. Riny Y. Parapat	Chemical Engineering	Itenas – Indonesia
Dr. Winarno Sugeng	Informatics Engineering	Itenas – Indonesia
Dr. Achmad Ghazali	SBM	ITB – Indonesia

**International Scientific Committee:**

Prof. Dr. Istvan Farkas	Szent Istvan University – Hungary
Prof. Dr. Istvan Szabo	Szent Istvan University – Hungary
Prof. DSc. József Horabik	Polish of Academy of Sciences – Poland
Prof. Ing. CSc. Martin Libra	Czech University of Life Sciences Prague – Czech Republic
Prof. RNDr. Ing. Jiri Blahovec, DrSc.	Czech University of Life Sciences Prague – Czech Republic
Prof. Dr. Henrik Lund	Aalborg University – Denmark
Prof. Dr.-Ing. Klaus Günter Gottschalk	Leibniz Institute for Agricultural Engineering and Bioeconomy- Germany
Prof. R. Schomaecker	Technical University Berlin – Germany
Prof. M. Schwarze	Technical University Berlin – Germany
Prof. Colin Webb	The University of Manchester – UK
Prof. Paul Sharratt	Institute of Chemical and Engineering Sciences – Singapore
Dr. Istvan Seres	Szent Istvan University – Hungary
Doc. Ing. Jan Banout, Ph.D.	Czech University of Life Sciences Prague – Czech Republic
Doc. RNDr. Zuzana Hlaváčová, CSc.	Slovak University of Agriculture in Nitra – Slovak Republic
Doc. RNDr. Vlasta Vozárová, PhD.	Slovak University of Agriculture in Nitra – Slovak Republic
Dr. Agus Saptoro	Curtin University – Malaysia
Dr. Martino Luis	University Utara – Malaysia

## **PREFACE**

### **WELCOME FROM THE RECTOR INSTITUT TEKNOLOGI NASIONAL BANDUNG**

Dear speakers and participants,

Welcome to Bandung and welcome to Itenas campus!

It is great pleasure for me to welcome you in campus of Itenas Bandung at the 1<sup>st</sup> Faculty of Industrial Technology International Congress (FoITIC) 2017.

The theme for the 1<sup>st</sup> FoITIC 2017 “Toward Reliability Renewable and Sustainable Energy Systems: Challenges and Opportunities”, is very relevant with the current hot issues about climate change, growing populations and limited fossil fuel resources.

We believe that scientists and researchers will hand in hand with industrial experts, to create and develop new renewable and sustainable technologies that enable human to make products and services more efficient, protect environment and keep people healthier.

I am deeply grateful appreciative to the Faculty of Industrial Technology Itenas, Indonesian Society Reliability, Institute of Electrical & Electronics Engineers Indonesia Society on Social Implication of Technology Chapter, IEEE CAS Hyderabad, delegates, organizing committee and many others who have contributed to the success of this conference.

I am confident that this event will serve to promote much valuable communication and information exchange among scientist – researcher and industrial expert.

May we have a successful, stimulating, fruitful and rewarding the conference.

Thank you.

**Dr. Iman Aschuri**

Rector  
Institut Teknologi Nasional Bandung

## **PREFACE**

### **WELCOME FROM THE DEAN OF FACULTY OF INDUSTRIAL TECHNOLOGY, INSTITUT TEKNOLOGI NASIONAL BANDUNG**

Dear distinguished Guest, Ladies and Gentlemen,

Welcome to the 1<sup>st</sup> Faculty of Industrial Technology International Congress (FoITIC) 2017, which is organized by Faculty of Industrial Technology, Institut Teknologi Nasional (Itenas) Bandung, in conjunction with Indonesian Society for Reliability (ISR) and Institute of Electrical & Electronics Engineers Indonesia Society on Social Implication of Technology Chapter (IEEE Indonesia SSIT Chapter). In our Faculty, we have agreed that FoITIC event will be held every two years (biennial program).

The main theme for the 1<sup>st</sup> congress is “Towards Reliable Renewable and Sustainable Energy Systems: Challenges and Opportunities”. The congress will divide into 2 (two) main programs i.e. International Conference and international workshop.

The aim of the International Conference is invites academics, researchers, engineers, government officers, company delegates and students from the field of energy and other discipline to gather, present and share the results of their research and/or work, and discuss strategies for the future utilization of renewable and sustainable energy system.

Taking this opportunity, I would like to convey my sincere thanks and appreciations to our keynote speakers and invited speakers from Szent Istvan University Hungary, IEEE Indonesia SSIT Chapter, Indonesian Society for Reliability, University Malaysia Pahang and Indonesian Wind Energy Society, workshop facilitators i.e. IEEE Circuits and Systems (IEEE CAS) Hyderabad – India) and national and international scientific committee for their support of this important event. I would also like to invite all participants in expressing our appreciation to all members of the FoITIC 2017 organizing committee for their hard work in making this conference success.

Finally, we wish you all fruitful networking during conference and workshop, and we do hope that you will reap the most benefit of it.

Do enjoy your stay in Bandung, and thank you very much!

**Dr. Dani Rusirawan**

Dean Faculty of Industrial Technology – Institut Teknologi Nasional Bandung  
Chairman of FoITIC 2017

## ACKNOWLEDGEMENT

The completion of this undertaking could not have been possible without the participation and assistance of so many people whose names may not all be enumerated. The contributions are sincerely appreciated and gratefully acknowledged. The 1<sup>st</sup> International Conference on FoITIC (Faculty of Industrial Technology Congress) Organizing Committee wishes to express its gratitude and deep appreciation to the following:

1. Dr. Imam Aschuri, Rector of Institut Teknologi Nasional Bandung;
2. All keynote and invited speakers, moderators, conference speakers, all participants and others who have in one way or another contributed for their valuable participation;
3. Institute of Electrical & Electronics Engineers Indonesia Society on Social Implication of Technology Chapter (IEEE Indonesia SSIT Chapter);
4. Institute of Electrical & Electronics Engineers Circuits and Systems (IEEE CAS), Hyderabad India;
5. Indonesian Society for Reliability (ISR);
6. Universiti Malaysia Pahang;
7. Indonesian Wind Energy Society (IWES).

## KEYNOTE AND INVITED SPEAKERS INTERNATIONAL CONFERENCE

### **Prof. Dr. Istvan Farkas (Szent Istvan University)**

Prof. Dr. Istvan Farkas is Director of Institute for Environmental Engineering System, Szent Istvan University (SZIU), Godollo – Hungary. He is also Head of Department Physics and Process Control and head of Engineering Doctoral School, at SZIU. He got Doctoral Degree from Technical University Budapest (1985). Presently, a lot of his activities devotes on International professional societies such as: International Solar Energy Societies (ISES), International Federation of Automatic Control (IFAC), European Federation of Chemical Engineering (EFChE), European Thematic Network on Education and Research in Biosystems Engineering, European Network on Photovoltaic Technologies, FAO Regional Working Group on Greenhouse Crops in the SEE Countries, Solar Energy Journal Associate Editor, Drying Technology Journal Editorial Board, etc. He was a visiting Professor in several universities: Solar Energy Applications Laboratory, Colorado University State University, Fort Collins - USA; Department of Energy, Helsinki University of Technology, Espoo - Finland; Institut for Meteorology and Physics, University of Agricultures Sciencies, Vienna - Austria; Laboratory of Bioprocess Engineering, The University of Tokyo - Japan.

### **Ahmad Taufik, M.Eng., Ph.D (Indonesian Society for Reliability)**

Ahmad Taufik, M.Eng, Ph.D (Graduated from Georgia Institute of Technology, USA – 1996) is a lecturer and a professional trainer and consultant. He is member of American Society for Metals (ASM) and American Society for Mechanical Engineer (ASME). He performs research in fatigue and fracture mechanics of oil and gas pipeline. Dr. Ahmad Taufik highly experienced in providing industrial training and consulting work more than 20 projects related to Pipelines Failure Analysis, Risk and Reliability Assessment, Repair Design, Pipeline Corrosion Protection in Oil and Gas Industries. Dr. Ahmad Taufik has been chairman and speakers for many Oil and Gas International Conferences in Indonesia, (INDOPIPE, MAPREC), Malaysia (ASCOPE), Singapore and China (IPTEC) for the last five years. He is founder of Indonesian Society Reliability (ISR) and presently he is a chairman of the ISR. Since 2006, he was work as part time lecturer at Dept. of Mechanical Engineering, Itenas.

### **Prof. Dr. Soegijardjo Soegijoko (Institut Teknologi Nasional Bandung)**

Soegijardjo Soegijoko (born in Yogyakarta, 1942) earned his Engineer Degree in Telecommunication Engineering from the Department of Electrical Engineering, Institut Teknologi Bandung (ITB), Indonesia, in 1964. His Doctor Degree (*Docteur Ingenieur*) was obtained from USTL (*Universite des Sciences et Techniques du Languedoc, Montpellier, France*) in 1980. Additionally, he has also completed a number of non-degree or post-doctoral programs, such as: tertiary education (UNSW, Australia, 1970), VLSI Design (Stanford University – 1986; UNSW- 1991; Tokyo Institute of Technology-1984, 1985, 1990).



Since 1966, he joined ITB as a teaching staff at the Department of Electrical Engineering, (currently School of Electrical Engineering & Informatics) ITB, and appointed as a Professor on Biomedical Engineering in 1998. During his academic services at ITB (from 1966 – 2007), he has actively involved in the developments and operations of various units, e.g.: Electronics Laboratory, Master Program on Microelectronics, Inter University Center on Microelectronics, Biomedical Engineering Program (Undergraduate, Master & Doctorate programs), and Biomedical Engineering Laboratory. Although he has been officially retired in 2007, he has appointed as an adjunct Professor at ITB for some years. At present (August 2017), he is an adjunct Professor at the Department of Electrical Engineering, Institut Teknologi Nasional (ITENAS) Bandung (Indonesia). His current research interests include: Biomedical Engineering Instrumentation, e-Health & Telemedicine Systems, and Biomedical Engineering Education.

He has published more than 100 international papers in the above-mentioned research interests. Moreover, he (and his colleagues) have also authored five different book chapter titles (on biomedical engineering, ehealth & telemedicine) published by Jimoondang (Korea, 2008), Springer (Singapore, 2014), CRC Press – Taylor Francis (2016), and Springer (2017).

Currently, he actively involves in various societies within the IEEE that include: EMBS, SSIT, CASS, Computer, and Education, as well as SIGHT (Special Interest Group on Humanitarian Activities). He is currently the IEEE Indonesia SSIT Chapter Chair, EMBS Chapter Chair and actively involves in the Indonesian eHealth & Telemedicine Society (leHTS) as well as the Indonesian Biomedical Engineering Society (IBES).

Prof. Dr. Ir. Soegijardjo Soegijoko is a *Life Senior Member* of the IEEE, and can be reached through: [soegi@ieee.org](mailto:soegi@ieee.org)

### **Prof. Dr. Rizalman Mamat (Universiti Malaysia Pahang)**

Prof. Dr. Rizalman Mamat presently is Dean of Faculty Mechanical Engineering, Universiti Malaysia Pahang, Malaysia. He got Doctoral degree from University of Birmingham, United Kingdom in fuel and energy. Previously, he obtained his BSc and MSc from University Teknologi Malaysia (UTM). His field research interest is Heat transfer, Combustion, Internal Combustion Engine, Alternative Energy, Computational Fluid Dynamics, Propulsion System. Prof. Dr. Rizalman Mamat was visiting Professor at Karlsruhe University of Applied Science Germany (2017), Faculty of Engineering Universitas Abulyatama Aceh, Indonesia (2017), Faculty of Engineering Universitas Gajah Putih Aceh, Indonesia (2017), Department of Mechanical Manufacture & Automation Ningxia University, Yinchuan, China (2016), Department of Mechanical Manufacture & Automation Ningxia University, Yinchuan, China (2015).

**Mr. Soeripno Martosaputro (Indonesia Wind Energy Society)**

Soeripno Martosaputro, graduated from Universitas Sebelas Maret (Bachelor) and University of Pancasila (MSc.). Presently, he is worked at PT UPC Renewables. Moreover, he is Chairman of Indonesia Wind Energy Society (IWES) and Chairman of Expert Board of Indonesia Wind Energy Association (IWEA). Previously he worked as a researcher at the National Institute of Aeronautics and Space (LAPAN), Aerospace Technology Center, particularly in the field of technology development and engineering of the Wind Energy Conversion Systems. He is active in the field of science and technology utilization in particular wind energy technology as speakers and resource persons in seminars nationally and internationally. He is member of the Asia Pacific Wind Energy Forum (APWEF), Indonesia National Committee World Energy Congress (KNI-WEC), Indonesia Renewable Energy Society (METI), and National Research Council (DRN). In 2012 – 2016, he was act as National Project Manager of WHYPGEN (Wind Hybrid Power Generation market initiatives Project) – UNDP Project.

## LIST OF CONTENTS

<b>Committee</b>	<b>iii</b>
<b>Preface: The Rector of Iteas Bandung</b>	<b>v</b>
<b>Preface: The Dean of Faculty of Industrial Technology / Chairman of FoITIC 2019</b>	<b>vi</b>
<b>Acknowledgement</b>	<b>vii</b>
<b>Keynote and invited speaker International Conference</b>	<b>viii</b>
<b>A. Renewable Energy Resources Assessment; Producing and storing renewable electricity; Off-grid &amp; rural energy access; Renewable energy grid integration &amp; distribution: utilities of the future</b>	<b>1</b>
A1. New trends in solar thermal and photovoltaic applications ( <i>István Farkas</i> )	2
A2. Distribution of Direct and Diffuse Radiation on Bawean Island, East Java, Indonesia ( <i>Yusuf Suryo Utomo</i> )	10
A3. Comparison Study of Solar Flat Plate Collector With Two Different Absorber Materials ( <i>Amrizal, Amrul, Ahmad Yonanda, Zulfa</i> )	17
A4. Hybrid System Solution for Off Grid and Rural Energy Access in Indonesia ( <i>Soeripno Martosaputro and Eduardus Jonathan</i> )	23
A5. An Experimental Model Piezoelectric Cantilever Beam for Energy Harvesting ( <i>Aditya Sukma Nugraha and Sapdo Utomo</i> )	31
A6. Design and Optimization of Hybrid Power Plant in Household Scales Using Homer Models ( <i>Ibrahim Syaharuddin, Dani Rusirawan</i> )	38
A7. Storage-Integrated Hybrid Renewable Energy Optimization to Reduce Intermittency in Weak Grids ( <i>Bimo Adi Kusumo</i> )	46
A8. Characteristic of Taperless Blade Wind Turbine ( <i>Muhammad Haekal and Dani Rusirawan</i> )	55
A9. Off-grid Renewable Energy Program for Sustainable Rural Electrification ( <i>Ilyas Taufiqurrohman</i> )	62
A10. Study of Hybrid "Photovoltaic and Wind Turbine" System Using Homer Program for Regional Cidahu Central - District Kuningan ( <i>Agus Adi Nursalim and Dani Rusirawan</i> )	68
A11. Simulation of Water Flow Distribution on Low Head Picohydro Capacity 2 kW ( <i>Agung M. Werdhana and Agus Hermanto</i> )	76
A12. Effect of combustion saturated and unsaturated fatty acids pure vegetable oil for noise ( <i>Dony Perdana, Eddy Gunawan</i> )	83
<b>B. From laboratory to the real world renewable energy system</b>	<b>88</b>
B1. Experimental investigation on combustion and emission of CI engine fueled with gasoline-biodiesel blends in early injection HCCI mode ( <i>Yanuandri Putrasari and Ocktaeck Lim</i> )	89

B2.	Stress And Displacement Analysis On Communal Horizontal Composter 40 Kg Capacity Using Solidwork ( <i>Noviyanti Nugraha, M Azis Mahardika and Alfie Pratama</i> )	97
B3.	A Study on the Spray Characteristics of an 800 kPa CNG Port Injector ( <i>Sakda Thongchai and Ocktaeck Lim</i> )	105
B4.	Investigation of Flow Field Modeling on Gasoline Engine of Motor Cycles ( <i>Bambang Wahono, Yanuandri Putrasari and Ocktaeck Lim</i> )	111
B5.	Influence of Configuration Steam Ejector – LRVP on Geothermal Power Plant 55 MW Capacity ( <i>Fajri Jayakelana and Agus Hermanto</i> )	118
B6.	The Development of Investment Casting Technology for the Manufacture of Import Substitution Casting Products by Using of Local Raw Materials ( <i>Hafid, T. Taryaman and S.B. Pratomo</i> )	126
B7.	Comparative Performance of Several Fixed Bed Dryer Arrangement for Seaweed Product Drying ( <i>Salafuddin, Daren Ferreira, Ronny Kurniawan, Nayl Diab</i> )	133
<b>C.</b>	<b>Electric power and energy efficiencies; Renewable energy grid integration &amp; distribution: utilities of the future; Automation and measurement technologies</b>	<b>141</b>
C1.	Optimal Scheduling for Dynamic Loads Using Direct Method ( <i>Hermagasantos Zein, Jangkung Raharjo and Yusra Sabri</i> )	142
C2.	Development Control System Of Parallel Inverter by Reconfiguration PV Circuit Using Fuzzy Logic on Islanding Microgrid ( <i>Hartono Budi Santoso</i> )	150
C3.	Development of a Drowsiness Detector based on the Duration of Eye closure using A Low-Cost EMG ( <i>Dian Artanto, Ign. Deradjad Pranowo, M. Prayadi Sulistyanto, Ervan Erry Pramesta</i> )	158
C4.	Effect of Air Gap on Armature Voltage on Axial Flux Permanent-Magnet Generator ac by Using NdFeB 53 ( <i>Asep Andang and Nurul Hiron</i> )	164
C5.	Implementation of Digital Communication System on DSK TMS320C6713 ( <i>Lita Lidyawati, Arsyad R. Darlis, Dwi Aryanta, Lucia Jambola and Feri Kurnia</i> )	170
<b>D.</b>	<b>Automation and measurement technologies; Computer aided engineering; Computing Technology for Sustainable Industrial System; Supply Chain Management &amp; Logistics</b>	<b>178</b>
D1.	Proposed Ideas For Preventing Operational Risk On PT. Global Indo Pangan's Supply Chain Using House Of Risk 1 Method ( <i>Edi Susanto, Nanda Fadhil A and Melati Kurniawati</i> )	179
D2.	Making Automatic Unloading Tools on The Goodway GV-500 Machine ( <i>Suhartinah, Laeli Nur Rohmawati and Muhammad Hidayat</i> )	186
D3.	Realization and Key Analysis on Blockchain Bitcoin ( <i>Muhammad Lazuardi Wirananda Putra, Surya Michrandi Nasution and Marisa W. Paryasto</i> )	192
D4.	Object Oriented Simulation For Improving Unloading And Loading Process At Tanjung Priok Port ( <i>Fadillah Ramadhan, Said Baisa and Arif Imran</i> )	200
D5.	Investigation of Classification Algorithm for Land Cover Mapping in Oil Palm Area Using Optical Remote Sensing ( <i>Anggun Tridawati and Soni Darmawan</i> )	207

D6.	Robust Indirect Adaptive Control Using RLS for DC Motor ( <i>Sabat Anwari</i> )	215
D7.	Alumni Face Recognition Using Fisherface Method ( <i>Gelar Aulia Prima Putra, Asep Nana Hermana and Irma Amelia Dewi Miftahuddin</i> )	223
D8.	Implementation of Vigenere Cipher with Euler Key Generator to Secure Text Document ( <i>Mira Musrini, Budi Rahardjo, Ramdani Krisnadi</i> )	234
D9.	Utilization of Bottle Plastic Waste at Community Level through Gamification Method ( <i>Rio Korio Utoro</i> )	239
D10.	Building a Decision Support System (DSS) for Banking Credit Application using Simple Additive Weighting (SAW) Method (Case Study: BPR Syariah) ( <i>Budi Raharjo, Mira Musrini and Willy Edya Sukma</i> )	244
<b>E.</b>	<b>Reliability of renewable energy system; Environmental Technologies</b>	<b>253</b>
E1.	Determining Mean Time between Failure (MTBF) on Machinery using Reliability Analysis ( <i>Nuha Desi Anggraeni</i> )	254
E2.	Investigation of Land Cover Classification in Oil Palm Area Based on ALOS PALSAR 2 Image ( <i>Endyana Amin and Soni Darmawan</i> )	258
<b>F.</b>	<b>Other topics</b>	<b>264</b>
F1.	Aero-hidroponic products for rural forest farming ( <i>Edi Setiadi Putra and Jamaludin Wiartakusumah</i> )	265
F2.	Task Assessment as Learning Tools to Meet Actual Architectural Issues ( <i>Shirley Wahadamaputera, Bambang Subekti and Theresia Pynkyawati</i> )	266
F3.	Application of "Stilasi" Techniques in Motif Various as a Method for Improving Creative Ability of Small Medium Enterprise (SME) of Footwear Industry ( <i>Arif Waskito and Agus Mulyana</i> )	272
F4.	Exploration of Plastic PVC Material for Jewelry Accessories ( <i>Dedy Ismail</i> )	280
F5.	Invention of Glass Bottle Waste Musical Instrument ( <i>Agung Pramudya Wijaya</i> )	286

## **Development of a Drowsiness Detector based on the Duration of Eye closure using A Low-Cost EMG**

**Dian Artanto<sup>1,\*</sup>, Ign. Deradjad Pranowo<sup>1</sup>, M. Prayadi Sulistyanto<sup>2</sup>, Ervan Erry Pramesta<sup>2</sup>**

<sup>1</sup> Mekatronika, Politeknik Mekatronika Sanata Dharma, Yogyakarta - INDONESIA

<sup>2</sup> Desain Produk Mekatronika, Politeknik Mekatronika Sanata Dharma, Yogyakarta - INDONESIA

\*Corresponding author e-mail: dian.artanto@pmsd.ac.id

### **Abstract**

Many traffic accidents are caused by drivers who are less concentrated due to drowsiness. From existing reports, it is known that the loss due to traffic accidents is very large, not only bring bad impact to the victims, also for the family environment, community and country. Seeing the conditions of this traffic problem, a device that can wake the driver while sleepy can be a solution. From several studies on drowsiness, it has been found that there is a connection between the drowsiness with blinking and closing the eyes often and long. This paper proposes a device that can detect the duration and frequency of eye closure using a low-cost EMG. When the accumulated duration of the eye closure exceeds the specified limit, a buzzer will sound to wake the driver. Compared to other detection devices, the low-cost EMG-based drowsy detector is promising, as it can be mounted practically on an eyeglass frame, and does not damage or injure the eyes. The development of this device so that it can be a reliable and economical device becomes an interesting challenge for the author and his team.

*Keywords: traffic accidents, a drowsiness detector, an eye closure duration, a low-cost EMG, an eyeglass frame.*

## **1. Introduction**

The global status report on road safety that released by the UN WHO in 2015 states that deaths from traffic accidents around the world have reached 1.25 million per year, which means close to 3400 deaths every day. It is also reported that traffic accidents are the leading cause of death globally among people aged 15-29. Without proper effort, deaths from traffic accidents can be around 1.9 million per year by 2030 (WHO, 2015).

Traffic accidents have a terrible impact on individuals, communities and countries. It all causes not only grief and suffering, but also economic losses, productivity losses, reduced quality of life, and other social impacts (Soehodho, 2017; Sugiyanto, 2017).

Traffic accidents are often caused by three different factor types, namely, human error factors, vehicle factors, and external factors (including road conditions). Human error factors are the highest causal to traffic accidents, especially the lack of concentration due to drowsiness (Zuraida et al., 2017; Puspasari et al., 2015).

Drowsy driving is a major contributing factor to a traffic accident. This has been proven by the many studies that found a connection between driver drowsiness and traffic accidents. Preventing the driver from drowsiness will be able to reduce accidents. Physiological measures have frequently been used for drowsiness detection as they can provide a direct and objective measure. Possible measures are EEG (Electro-Encephalo-Graphy), eye movements, eye blinks and eyelid closure (Svensson, 2004).

EEG is an electrophysiological monitoring method to record electrical activity of the brain. EEG has shown to be a reliable indicator of drowsiness. The amount of activity in different frequency bands can be measured to detect the stage of drowsiness. The disadvantage of using EEG are the impractical placement of the device on the driver, and the obtrusive electrodes which make them unsuitable to use in cars, as cabling of the drivers would not achieve any acceptance (Mardi et al., 2011).

Eye movements can be measured using EOG (Electro-Oculo-Graphy). EOG is a technique for measuring the corneo-retinal standing potential that exists between the front and the back of the human eye. However, just like EEG, EOG has a weakness in the impractical placement of the device and the number of electrodes that must be put on the driver (Bandara, 2009).

Eyelid closure can be monitored with the camera very precisely and quickly. However, the use of the camera has a limitation of illumination, as the normal cameras do not work well at night when monitoring is more important. Other concerns for camera-based systems are the high cost and the loss of image when the drivers look in their mirrors outside the view of cameras. In addition, most of the camera-based system need computers, image processing algorithms and feature extraction techniques to extract drowsy symptoms (Garcia et al., 2010).

Instead of the camera, the eyelid closure can be captured using a portable and low-cost device based on IR sensors mounted on an eyeglass, that directing an IR beam to the human eye (Ma'touq et al., 2014). However, strong IR beam in high temperature could be harmful to eyes (Agrawal, 2017).

As an alternative drowsiness detection device, this paper proposes the use of a low-cost EMG (Electro-Myo-Graphy) to monitor the eyelid muscles, and measure the duration of the eyelid closure, then sound a warning when the duration exceed the limit.

## 2. Methods

### 2.1. Prototype of the Detector

In this paper, as mentioned earlier, a drowsiness detection device is proposed using a low-cost EMG, which is widely available in the local market under the name Myoware. To be able to measure the muscle electrical activity on skin, that has a very small voltage value (in  $\mu V$  unit), Myoware is equipped with 3 electrodes; 2 of them must be placed on skin in the measured muscle area, and 1 electrode must be placed on skin outside the muscle area, which is used as the ground point. All three electrodes can use any conductor material (Advancer, 2013).

The muscle to open and close the eyelids known as Levator Palpebrae, located at the top of the eye. To measure the tension in the muscle, 2 electrodes must be placed around the muscle, precisely in the upper eyelid, while 1 electrode can be placed outside the muscle, in the area close to the ear. The placement of a pair of EMG electrodes does not need to be pressed, just simply touching the skin. Therefore, the installation of a pair of electrodes can be done with the help of glasses, i.e. by placing it on the frame of the top glasses, such that when the glasses are worn, the pair of electrodes can touch the upper eyelid skin. The following figure is a prototype of drowsiness detection device that involves eyeglasses, electrodes, a Myoware Muscle Sensor, an Arduino Nano, a Potentiometer, a Buzzer and 2 Batteries.

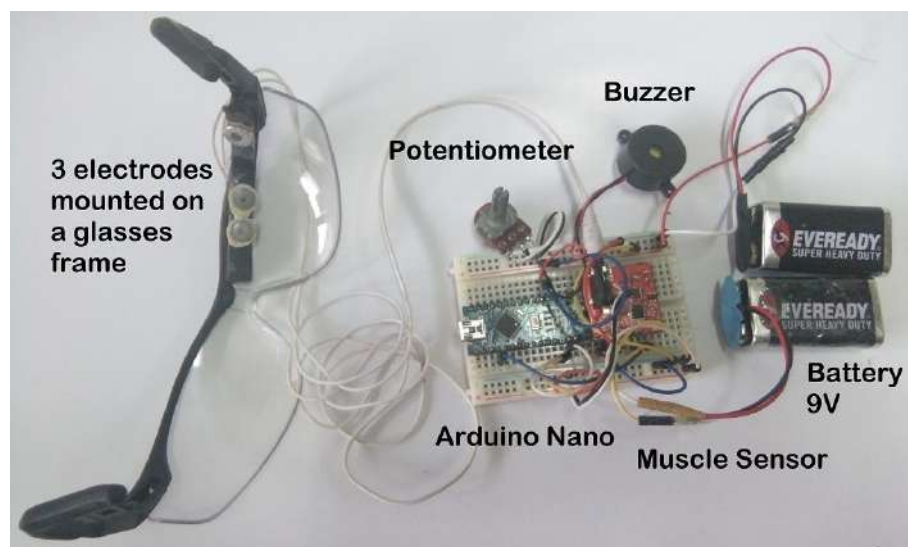


Fig. 1: The hardware prototype of drowsiness detection device

For more details about the circuit schematic of device and the placement of the three electrodes on the frame of eyeglasses, see Fig 2 below.

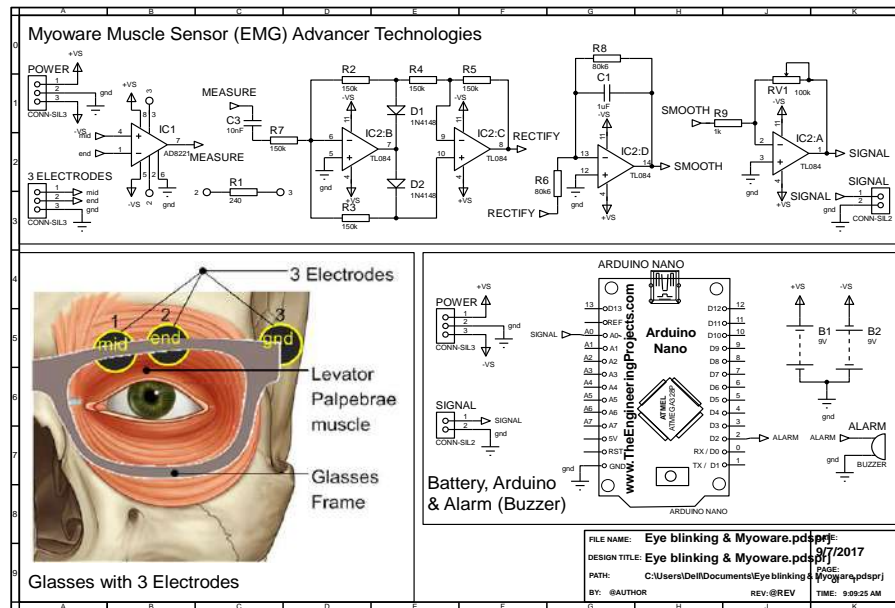


Fig. 2: Circuit Schematic and electrodes placement on eyeglass

Seen from Fig 2 above, a circuit schematic of the drowsiness detection device. The way this circuit works is, starting with an op-amp AD 8221 that measures a very small voltage difference between two electrodes placed in the eye muscle region. The result of the measurement is then rectified, smoothed and then amplified again to get the right value to be read Arduino. Using all the circuit, the Myoware sensor output value when the eyelid is opened is 0, and the output value when the eyelid is closed is greater than 0, and the value will be even greater when the eyelids are closed more tightly.

Fig 3 and 4 below show the graph of the eye muscle sensor output value using Serial Plotter Arduino when the eyelids are closed and when the eyelid are opened. It appears that the value of the graph curve becomes greater than 0 when the eyelid is closed, and is 0 when the eyelid is opened.



Fig 3: The graph when the eyelid is closed

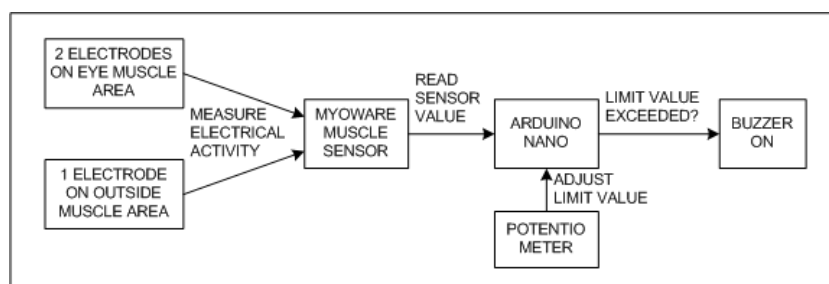




**Fig 4: The graph when the eyelid is opened**

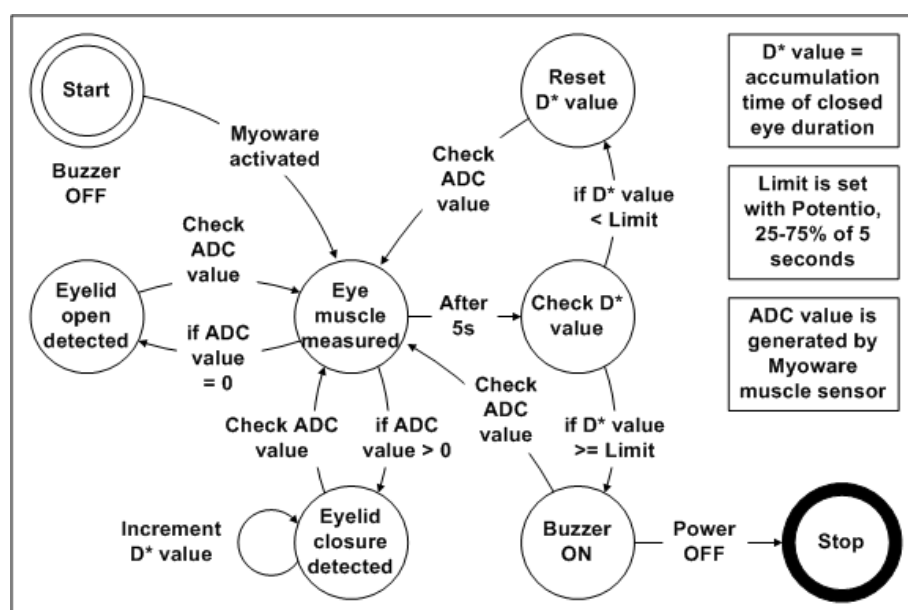
## 2.2. Prototype of the Alert System

After the Myoware sensor output value when the eyelid is opened and closed is known, the next step is to add an alert system so that the device can give a warning when a certain limit value is exceeded. To achieve this, a Buzzer and a Potentiometer have been added, as shown in the hardware prototype in Figure 1 above. The Buzzer here is used to generate warning sounds, and the Potentiometer here is used to set the time limit value of closed eyelid duration. Figure 5 below shows the block function diagram of the drowsiness detection system.



**Fig 5: Function Block Diagram of Drowsiness Alert System**

To achieve the function of the device following the function block diagram above, here is a more detailed state diagram of the working principle of the drowsiness alert system.



**Fig 6: State Diagram of Drowsiness Alert System**

Here is an explanation of the State Diagram above. Starting after Myoware is activated. It will get the value of eye muscle electrical activity. When the eye muscle is opened then the sensor value will be 0, and when the eye is closed the sensor value will be greater than 0. When the sensor value is greater than 0, a variable named D, will be incremented by 1. After 5 seconds, the value of D is compared with the time limit set by Potentiometer. If the value of D is greater than the time limit, then Buzzer will be sounded. If the value of D is less than the time limit, the value of D will be reset to 0. After the Buzzer sounds, Buzzer will continue to sound until the power supply to the device is stopped.

### 3. Results and Discussion

#### 3.1. Results

From the methods of making the drowsiness detection device and the alert system proposed above, it has obtained the results of a portable and easily wearable drowsiness detection device.

Compared to the use of EEG and EOG, the device proposed in this paper is easier to install, because the electrode is installed only 3, so it can be placed on the glasses frame, while in EEG and EOG more than 3, so the use of EEG and EOG is perceived by the driver a little inconvenient, especially for motorcyclists. When compared with the use of cameras to monitor the eyes, the device proposed in this paper is better, because it is not affected lighting, both day and night. When compared to the drowsy detector using an IR beam directed directly to the eye, the device proposed in this paper is better, as it does not injure the eyes.

Another interesting thing, this device is quite economical, because EMG used is a very cheap type of EMG, also Arduino Nano, so the cost of making this device quite affordable. The result of making this tool is quite promising and can be developed to better meet the needs of users.

#### 3.2. Discussion

To be discussed, the time limit setting of the closed eye duration is 25 - 75% of 5 seconds, i.e. 1.25 - 3.75 seconds. The time limit setting is determined by experience and reality on the highway, where for drivers who are driving at high speed, closing the eyes for more than 2 seconds can lead to a traffic accident.

The time limit value is deliberately made to have variations, due to different needs and levels of drowsiness. Some people have a habit of closing the eyes many times even if not sleepy. Some others may have experienced heavy drowsiness but did not close their eyes at all. So, for some cases, closing the eyes is not directly related to drowsiness. It is necessary to observe the habit before wearing this device. However, in general, if a person initially rarely closes and blinks his/her eyes, then after a while becomes frequently closes and blinks it, then this can be a sign that the person is sleepy. So, a change of pattern from closing the eyes suddenly and often can be a sign that there is drowsiness.

### 4. Conclusion

In this paper, a prototype of drowsiness detection device using cheap and easy-to-wear EMG has been proposed. From the observation results, this device is quite promising because of the following points:

1. The use of closed eye duration indicator has a better chance of detection, because the results are quickly known so that it can give warning more quickly when the driver is sleepy.
2. Use of EMG is better than EEG and EOG, because the number of EMG electrodes is less, so it is not complicated to be mounted on the glasses frame.
3. Use of EMG is better than cameras and IR sensors, because it is not affected by daylight or nighttime light, and does not injure the eyes.

In closing, this proposed device still needs to be developed, because for some people, even if they often close and blink their eyes, it does not mean they're sleepy, but because they're used to such reflexes. But if the person rarely blinks and closes his eyes, then after some time becomes often blinks and closes his/her eyes, then this condition can be a sign of the person is sleepy. These specific conditions need to be considered for the development of this device in the future.

## 5. References

- Advancer Technologies, 2013. Muscle Sensor v3 User's Manual. Available at: <http://www.advancertechnologies.com/p/muscle-sensor-v3.html>, accessed on September 5, 2017.
- Agrawal, D.P., 2017. Embedded Sensor Systems. © Springer Nature Singapore Pte Ltd., ISBN 978-981-10-3037-6. ISBN 978-981-10-3038-3 (eBook) DOI 10.1007/978-981-10-3038-3.
- Bandara, I. B., 2009. Driver drowsiness detection based on eye blink", Faculty of Enterprise & Innovation, Buckinghamshire New University, Brunel University, March.
- García, I., Bronte, S., Bergasa, L. M., Hernandez, N., Delgado, B., Sevillano, M., 2010. Vision-based drowsiness detector for a Realistic Driving Simulator. Intelligent Transportation Systems (ITSC), 13th International IEEE Conference on.
- Ma'touq, J., Al-Nabulsi, J., Al-Kazwini, A., Baniyassien, A., Issa, G. A., Mohammad, H., 2014. Eye blinking-based method for detecting driver drowsiness. J Med Eng Technology 38(8): 416–419, ©2014 Informa UK Ltd., ISSN: 0309-1902 (print), 1464-522X (electronic).
- Mardi, Z., Ashtiani, S.N., Mikaili, M., 2011. EEG-based Drowsiness Detection for Safe Driving Using Chaotic Features and Statistical Tests. J Med Signals Sens. May;1(2):130-7.
- Puspasari, M. A., Muslim, E., Moch, B. N., Aristides, A., 2015. Fatigue Measurement in Car Driving activity using Physiological, Cognitive, and Subjective Approaches. International Journal of Technology 6: 971-975, ISSN 2086-9614.
- Soehodho, S., 2017. Public Transportation Development and Traffic Accident Prevention in Indonesia. IATSS Research, 40, pp. 76-80.
- Sugiyanto, G., 2017. The Cost of Traffic Accident and Equivalent Accident Number in Developing Countries (Case Study In Indonesia). ARPN Journal of Engineering and Applied Sciences, 12(2), pp. 389-397.
- Svensson, U., 2004. Blink behaviour based drowsiness detection – method development and validation. Master's thesis project in Applied Physics and Electrical Engineering, Swedish National Road and Transport Research Institute, ISSN 1102-626X.
- World Health Organization, 2015. Global Status Report on Road Safety 2015. Available at: [http://www.who.int/violence\\_injury\\_prevention/road\\_safety\\_status/2015/en/](http://www.who.int/violence_injury_prevention/road_safety_status/2015/en/), accessed on September 5, 2017.
- Zuraida, R., Iridiastadi, H., Sitalaksan, I. Z., 2017. Indonesian driver's characteristics associated with road accidents. International Journal of Technology 2: 311-319, ISSN 2086-9614.